

## Banāras Mint – Hammered Coinages – Gold, Mohur – INO Shāh Alām – 1776 to 1812



الرحامی دین محمد  
فصحاء عالم بادشاہ  
ذو برکت و کرم

*sikka zad bar haft kishwar sāya fazl llāh hāmī al-dīn muḥammad shāh 'ālam bādshāh [AH]* (= Defender of the religion of Muḥammad, Shāh 'Ālam Emperor Shadow of the divine favour, put his stamp on the seven climes, [AH]).



مہنہ محمد آباد  
خلو س مسہ  
بنارس

*zarb muḥammadābād banāras sanah [RY] julūs maimanat mānūs* (= Struck at Muḥammadābād Banāras in the [RY] year of his reign of tranquil prosperity).

	Mohur	Half Mohur	Quarter Mohur	Eighth Mohur
Official Weight (g)	10.88	5.44	2.72	1.36
Actual Weight (g)	10.78-10.89	5.42		1.6 but includes mount
Actual Diameter (mm)	20.9-23.2	14.5-15.0	~12.5	~11
Composition	Gold			
Edge	Plain			

### Catalogue

Cat No.	Pr. No.	Denomination	AH	RY	Differ. Marks	Comments	Rarity
7.1	-	Mohur	[xxxx]	17	?	Ref: EIC records. None known	NR
7.2	-	"	1192	18	B		RRR
7.3	-	"	[xxxx]	19	?	Ref: EIC records. None known	NR
7.4	-	"	[xxxx]	20	?	Ref: EIC records. None known	NR
7.5	-	"	1193	21	A	Flower rather than star on reverse	RRR
7.6	-	"	[xxxx]	22	?	Ref: EIC records. None known	NR
7.7	-	"	[xxxx]	23	?	Ref: EIC records. None known	NR
7.8	-	"	[xxxx]	24	None	Ref: Senior (1993), ONSNL 137. Simplified obverse legend differs from other dates.	RRR
7.9	-	"	[xxxx]	25	?	Ref: EIC records. None known	NR
7.10	-	"	1199	26	D	Baldwin (2008), sale 54 (Diana), lot 52.	RR
7.11	-	"	1199	27	D	Normal engraving. No barbels on fish.	RR
7.12	-	"	1199	27	None	Fish with Barbels. No differentiating marks.	RR
7.13	-	"	[xxxx]	28		Ref: EIC records. See Comments.	NR
7.14	-	"	1201	29	A	Ref: DNW (2002), sale 55, lot 1572.	RR
7.15	-	"	1202	29	A		RR
7.16	-	"	1202	30	D	Ref: Baldwin (2003), sale 35, lot 1704.	RR
7.17	-	"	1202	31	D	Ref: Baldwin (2004), sale 37, lot 1531 for coin with complete AH date. Also see photos.	RR
7.18	-	"	1203	31	D	Ref: Baldwin (2005), sale 40, lot 985.	RR
7.19	-	"	1203	32	D	Ref: Baldwin (2004), sale 37, lot 1532.	RR
7.20	-	"	1204	32	D	Ref: Baldwin (2003), sale 35, lot 1706.	RR
7.21	-	"	1209	36	D	Ref: Johnston.	RR
7.22	217	"	1209	37	D		RR
7.23	218	"	1213	41	D	Ref: Johnston.	RR
7.24	-	Half Mohur	1xxx	32	D	Only one known. Edge looks normal.	RRR
7.24B	-	Quarter Mohur	xxxx	26	D	Ref: Zubair Khan. Authenticity has been questioned.	RRR
7.24A	-	Eighth Mohur	xxxx	25		Ref: Berlin Museum. Ex Guthrie collection. These are the same type as the RY 24 mohur above	RRR

Bengal Presidency, Banāras Mint



Normal style



RY 24 style. *shāh 'ālam bādshāh ghāzī sikka mubārak*



Fish with barbels (RY 27)

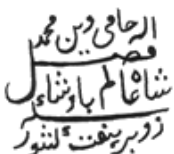
For differentiating marks see rupee

**Banāras Mint – Hammered Coinages – Silver, Rupee et infra 1776 to 1812**

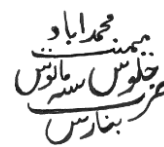
The set of marks identified by Pridmore as 'darogah's' marks are named here 'differentiating' marks. See Alan DeShazo for initial marks of mint masters.



*sikka zad bar haft kishwar sāya fazl ilāh hāmī dīn muḥammad shāh 'ālam bādshāh [AH]* (= Defender of the religion of Muḥammad, Shāh 'Ālam Emperor, Shadow of the divine favour, put his stamp on the seven climes, [AH]).



*zarb muḥammadābād banāras sanah [RY] julūs maimanat mānūs* (= Struck at Muḥammadābād Banāras in the 17/[RY] year of his reign of tranquil prosperity).



	Rupee	Half Rupee	Quarter Rupee	Eighth Rupee	Sixteenth Rupee
Official Weight (g)	11.33	5.66	2.83	1.42	0.71
Actual Weight (g)	10.85-11.37	5.40-5.65	2.63-2.82	1.30-1.42	0.65-0.71
Actual Diameter (mm)	21.3-24.9	18.1-21.5	14.8-17.8	12.6-14.8	9.7-12.4
Composition	Silver				

**Catalogue**

Cat No.	Pr. No.	Denomination	AH	RY	Differ. Mark	Comments	Rarity
7.25	219	Rupee	1190	17	A		R
7.26	220	"	1191	17	A		R
7.27	-	"	1191	17	B		R
7.28	221	"	1192	17	A		R
7.29	-	"	1192	17	B		R
7.32	-	"	1192	20	A	This and all later coins have dual RY e.g. 17/20. See Differ. Mark above for a transitory mark (from DeShazo).	R
7.33	222	"	1193	20	A		S
7.34	223	"	1193	21	A		S
7.35	-	"	1194	21	A	Mitchiner No. 1933.	S
7.36	224	"	1194	22	A		S
7.37	-	"	1195	22	A	Baldwin (2002), sale 31, lot 720	S
7.38	225	"	1195	23	C		S
7.39	-	"	1195	23	A	Ref: R Johnston, also Pankaj Tandon (2008), ONSNL 194, p. 37).	R
7.40	226	"	1196	24	A		S
7.40A	-	"	1196	24	C1		S
7.40C	-	"	1197	24	D	See Alan DeShazo	R
7.41	227	"	1197	25	D		S
7.42	-	"	1198	25	D		S
7.43	228	"	1198	26	D		S

7.44	229	"	1199	26	D		S
7.45	230	"	1199	27	D		S
7.46	-	"	1199	27	E	Ref: Johnston	R
7.46c	-	"	1199	27	F		R
7.47	231	"	1200	27	E		S
7.48		"	120x	27	F		R
7.49	-	"	1201	28	A		S
7.50	-	"	1201	28	G	Ref: Johnston	R
7.51	233	"	1201	29	A	Full die impression	RRR
7.52	232	"	1202	28	A		S
7.53	234	"	1202	29	A		S
7.54	235	"	1202	30	D		S
(7.55)	-	"	1202	31	D	Ref: HK/Singapore (2003), sale 36, lot 450 but no photo. May be 1203?.	S
7.56	236	"	1203	30	D		S
7.57	237	"	1203	31	D		S
7.58A	-	"	1204	31		LMC 4724 (thanks to Alan DeShazo)	R
7.59	238	"	1204	32	D		S
7.60	-	"	1205	32	D		R
7.61	239	"	1205	33	D		S
7.62	240	"	1206	33	D	LMC 4727	S
7.63	242	"	1206	34	D		S
7.64	243	"	1207	34	D		S
7.65	244	"	1207	35	D		S
7.66	245	"	1207	35	D	Full die impression	RRR
7.67	246	"	1208	35	D		S
7.68	247	"	1208	36	D		S
7.69	248	"	1209	36	D		S
7.70	249	"	1209	37	D		S
7.71	250	"	1210	37	D		S
(7.71a)	-	"	1210	37	S		
7.72	251	"	1210	38	D		S
7.73	252	"	1211	38	D		S
7.74	253	"	1211	39	D		S
7.74C	-	"	1211	40	D	Mule	R
7.76	254	"	1212	39	D		S
7.77	255	"	1212	40	D		S
7.78	241	"	1213	33	D	Mule	RR
7.79	256	"	1213	40	D		S
7.80	257	"	1213	41	D		S
7.81	258	"	1214	41	D		S
7.82	259	"	1214	42	D		S
(7.82a)	-	"	1214	42	I	Ref: Indian coin hoard	R
7.83	260	"	1215	42	D		S
7.84	261	"	1215	43	I		S
7.85	262	"	1216	43	I		S
7.86	263	"	1216	44	I		S
7.87	264	"	1217	44	J		S
7.88	265	"	1217	45	J		S
7.89	266	"	1217	45	J	Full die impression. Diam 29.5mm.	RRR
(7.89A)	-	"	1218	43	J?	Ref: Indian coin hoard	RR
7.90	267	"	1218	45	J		S
7.91	268	"	1218	46	J		S
7.92	-	"	1218	46	J	Full die impression. Ref: Fitzwilliam Museum. Diam 34.0mm	RRR
7.93	269	"	1219	46	J		S
7.94	-	"	1219	47	J		S
7.94C	-	"	1219	47	K		S
7.95	270	"	1219	47	K	Full die impression. Diam 33.3mm	RRR
7.96	271	"	1219	47	L		S

Bengal Presidency, Banāras Mint

<b>(7.96A)</b>		"	1219	47			
<b>7.97</b>	272	"	1220	47	L		S
<b>7.98</b>	-	"	1220	48	L		S
<b>7.99</b>	273	"	1220	48	M		S
<b>7.100</b>	274	"	1221	48	M		S
<b>(7.100A)</b>	-	"	1221	48	M	Ref: Indian coin hoard. Described as having a legend in two lines	RR
<b>7.101</b>	275	"	1221	49	N		N
<b>(7.101a)</b>	-	"	1221	49	None	Ref: Indian coin hoard	RRR
<b>7.102</b>	276	"	1222	49	N		N
<b>(7.102A)</b>	-	"	1222	49	N	Ref: Indian coin hoard. Described as having a legend in two lines	RR
<b>7.103</b>	277	"	1223	49	N		N
<b>7.103C</b>	-	"	1224	49	N	No barbels on fish. Ref: Johnston.	N
<b>7.104</b>	278	"	1224	49	N	Fish with barbels. They have barbels from this date forwards.	N
<b>7.105</b>	279	"	1225	49	N		N
<b>7.106</b>	280	"	1226	49	N		N
<b>7.107</b>	-	"	1227	49	N	Copper forgeries exist. See next entry.	N
<b>-</b>	-	"	122x	49	N	Copper forgery.	NR
<b>7.108</b>	281	Half Rupee	1196	24	A	Ref: Johnston	RRR
<b>7.109</b>		"	xxxx	31		Ref: Ashmolean Museum	RRR
<b>7.110</b>		"	1214	41	D	Ref: HK/Singapore (2003), sale 36, lot 452	RRR
<b>7.111</b>		"	12xx	47	L	Ref: Album (2006), list 218, lot 50809	RRR
<b>7.112</b>		"	12xx	48	L	Ref: Baldwin (2001), sale 25 (Wiggins), lot 598. Occurs with different marks. See photos.	RRR
<b>7.113</b>		"	1224	49	N	Ref: HK/Singapore (2003), sale 36, lot 452. No barbels on fish	RRR
<b>7.114</b>		"	1226	49	N	Barbels on fish (after 1224)	RRR
<b>7.115</b>	282	Quarter Rupee	1191	17	A	Baldwin (2003), sale 33, lot 1011.	RR
<b>7.116</b>		"	119x	22	A	Baldwin (2001), sale 25, lot 599.	RR
<b>7.117</b>		"	1199	26	D	Baldwin (2001), sale 25, lot 600. Johnston.	RR
<b>7.118</b>		"	1212	40	D	Ref: HK/Sing (2003), sale 36, lot 454.	RR
<b>7.119</b>		"	121x	42	D	Baldwin (2001), sale 25, lot 601.	RR
<b>7.120</b>		"	xxxx	43	I	Baldwin (2001), sale 25, lot 602.	RR
<b>7.121</b>		"	xxxx	46	J	Baldwin (2006), sale 47 (Stiller), lot 841.	RR
<b>7.121C</b>		"	1219	47	K OR L		RR
<b>7.121E</b>		"	xxxx	48	L		RR
<b>7.122</b>		"	xxxx	49	N	Fish without barbels (before 1225). Baldwin (2006), sale 47, lot 841.	RR
<b>7.123</b>		"	xxxx	49	N	Fish with barbels (1225 or later). Ref: Baldwin (2001), sale 25 (Wiggins), lot 603.	RR
<b>7.123E</b>		Eighth Rupee	xxxx	21	A?	Only RY 21 & earlier have reverse flower to right of RY	RR
<b>7.124</b>	283	"	xxxx	24	A	Ref: Baldwin (2001), sale 25 (Wiggins), lot 604.	RR
<b>7.125</b>		"	11xx	27	E	Ref: Thompson. Also HK/Sing (2003), sale 36, lot 455.	RR
<b>7.126</b>		"	xxxx	28	G	Ref: Weir, Also HK/Sing (2009), sale 46, lot 1122.	RR
<b>7.127</b>		"	1203	30	D	Baldwin (2006), sale 47 (Stiller), lot 843. Also, Baldwin (2013), sale 84 (Fore), lot 1770.	RR
<b>7.128</b>		"	xxxx	41	D	Baldwin (2010), sale 65, lot 1699.	RR
<b>7.129</b>		"	xxxx	43	?	Ref: Weir.	RR
<b>7.130</b>		"	xxxx	46	?	Ref: Weir.	RR
<b>7.131</b>		"	xxxx	47	L	Ref: Johnston.	RR
<b>7.132</b>		"	xxxx	48	L	Baldwin (2006), sale 47 (Stiller), lot 844.	RR
<b>7.132B</b>		"	xxxx	48	M		RR
<b>7.133</b>		"	xxxx	49	N	Baldwin (2001), sale 25, lot 605. No barbels on photographed specimens.	RR
<b>7.134</b>	284	Sixteenth Rupee	xxxx	21	A	Baldwin (2000), sale 22, lot 182.	RRR

<b>7.134B</b>		”	XXXX	24	?	Ref: Todywalla, sale 118. Lot 421	RRR
<b>7.134C</b>		”	XXXX	27	E	See photos for comments.	RRR
<b>7.134E</b>		”	XXXX	x8	?	Ref: Ashmolean	RRR
<b>7.134G</b>		”	XXXX	47	L	Ref: BM 1929.0808.4 (0.7g, 11.4-12.5mm)	RRR
<b>7.135</b>		”	XXXX	49	N	HK/Sing (2003), sale 36, lot 455. No barbels on photographed specimens.	RRR

**Banāras Differentiating Marks**

<i>Mark A</i>		<i>Mark B</i>	
			<i>Mark C1 with triad of dots under fish</i>
<i>Mark C</i>			
		<i>Mark D</i>	
			<i>Flower may have dots or petals</i>
<i>Mark E</i>	<i>Flower may have dots or petals</i>	<i>Mark F</i>	
		<i>Mark G</i>	
<i>Mark I</i>		<i>Mark J</i>	
<i>Mark K</i>		<i>Mark L</i>	
<i>Mark M</i>		<i>Mark N</i>	

**Reverse marks noted by Alan DeShazo**



be



ye



**Transitory Differentiating Mark from Alan DeShazo**

There is a transitory differ. mark that has not been recognized partly because of its being mistaken for being merely a diacritical mark. The operation of the Banāras mint under the EIC was made under the management of the English Resident during the course of RY 24. The last issue before the transfer displayed differ. mark A. When the control passed to the current Resident this new mark showed a triad of dots below the fish. A new Resident acceded to mint control and the mark was changed to D (with cross crosslet).



Mark A



Triad of dots under fish



Cross-Crosslet under fish

**Banāras Mint – Hammered Coinages – Silver, Rupee – Transitional Type – 1812**

This type may have been produced during the period 1810-1812, when the mint was being investigated by the Board of Commissions of the Ceded and Conquered territories.



الرحامی دین محمد  
شاہ عالم ہاوشاہی  
زربرینفت لسنور

sikka zad bar haft kishwar sāya fazl ilāh hāmī dīn muḥammad shāh ‘ālam bādshāh 1229 (= Defender of the religion of Muḥammad, Shāh ‘Ālam Emperor, Shadow of the divine favour, put his stamp on the seven climes, 1229).



بہمن محمد آباد  
جلوس سمنہ  
بنارس

zarb muḥammadābād banāras sanah 17/[RY] julūs maimanat mānūs (= Struck at Muḥammadābād Banāras in the 17/[RY] year of his reign of tranquil prosperity).

Official Weight (g)	11.33
Actual Weight (g)	10.82
Actual Diameter (mm)	26.1-26.6
Composition	Silver
Edge	Plain

**Catalogue**

Cat No.	Pr. No.	AH	RY	Comments	Rarity
7.136	-	1230	49	Ref: Baldwin (2001), sale 25 (Wiggins), lot 608. Probably issued in 1812. See photos for comments by Alan DeShazo. This coin may be counterfeit.	RRR

**Banāras Mint – Hammered Coinages – Silver, Rupee et infra 1812 to 1815**



الرحامى دين محمد  
فصل شاه عالم بادشاهى  
زاد بر بخت لنگور

*sikka zad bar haft kishwar sāya fazl ilāh hāmī dīn muḥammad shāh ‘ālam bādshāh [AH]* (= Defender of the religion of Muḥammad, Shāh ‘Ālam Emperor, Shadow of the divine favour, put his stamp on the seven climes, [AH]).



بمبند محمد ابادى  
جلوس سنه مائوس  
صرب بنارس

*ẓarb muḥammadābād banāras sanah 17/[RY] julūs maimanat mānūs* (= Struck at Muḥammadābād Banāras in the 17/[RY] year of his reign of tranquil prosperity).

	Rupee	Half Rupee	Quarter Rupee
Official Weight (g)	11.33	5.66	2.83
Actual Weight (g)	11.26-11.32	5.67	2.79-2.81
Actual Diameter (mm)	21.9-24.0	21.8-22.7	15.0-17.7
Composition	Silver		

**Catalogue**

Cat No.	Pr. No.	Denomination	AH	RY	Comments	Rarity
7.137	-	Rupee	1227	49	Ref: Baldwin (2001), sale 25 (Wiggins), lot 607	R
7.138	285	"	1228	49	also comes on larger flan (R. Weir)	R
7.139	286	"	1229	49	Also comes on a larger flan (Indian coin hoard)	S
7.140	287	Half Rupee	1229	49		RR
7.141	288	Quarter Rupee	1229	49		R

**Calcutta Mint – Milled Coinages – Silver, Rupee and Half Rupee Patterns 1815**



الرحامى دين محمد  
فصل شاه عالم بادشاهى  
زاد بر بخت لنگور

*sikka zad bar haft kishwar sāya fazl ilāh hāmī dīn muḥammad shāh ‘ālam bādshāh 1229* (= Defender of the religion of Muḥammad, Shāh ‘Ālam Emperor, Shadow of the divine favour, put his stamp on the seven climes, 1229).



بمبند محمد ابادى  
جلوس سنه مائوس  
صرب بنارس

*ẓarb muḥammadābād banāras sanah 17/[RY] julūs maimanat mānūs* (= Struck at Muḥammadābād Banāras in the 17<sup>th</sup>/49<sup>th</sup> year of his reign of tranquil prosperity).

	Rupee	Half Rupee
Actual Weight (g)	11.33	5.68
Actual Diameter (mm)	27.3-27.5	18.4-19.0
Composition	Silver	
Edge	Grained Left	

**Catalogue**

Cat No.	Pr. No.	Denomination	AH	RY	Comments	Rarity
7.142	291	Rupee	1229	17/49		RR
7.143	292	Half Rupee	"	"	Unfinished pattern.	RRR

**Calcutta Mint – Milled Coinages – Silver, Quarter Rupee Pattern 1815**



عالم  
عالم  
عالم  
عالم

1229 *sikka shāh 'ālam bādshāh ghāzī* (= 1229, coin of Shāh 'Ālam the victorious Emperor).



ضرب  
بنارس

*ẓarb banāras sanah 17/49* (= Struck at Banāras in year 17/49).

Actual Weight (g)	2.84-2.85
Actual Diameter (mm)	16.6-19.2
Composition	Silver
Edge	Grained Left

**Catalogue**

Cat No.	Pr. No.	Denomination	AH	RY	Comments	Rarity
7.144	293	Quarter Rupee	1229	17/49	Unfinished pattern.	RR

**Banāras Mint – Milled Coinages – Silver, Rupee and Half Rupee 1815**



الرحامی دین محمد  
فصل عالم با و شاهی  
شاه عالم با و شاهی  
ذو برکت و لنور

*sikka zad bar haft kishwar sāya fazl ilāh hāmī dīn muḥammad shāh 'ālam bādshāh [AH]* (= Defender of the religion of Muḥammad, Shāh 'Ālam Emperor, Shadow of the divine favour, put his stamp on the seven climes, [AH]).



محمد آباد  
خلوس سنه  
ضرب بنارس

*ẓarb muḥammadābād banāras sanah 17/49 julūs maimanat mānūs* (= Struck at Muḥammadābād Banāras in the 17/49 year of his reign of tranquil prosperity).

	Rupee	Half Rupee
Official Weight (g)	11.33	5.66
Actual Weight (g)	11.41	5.68
Actual Diameter (mm)	26.1-26.4	18.4-19.0
Composition	Silver	
Edge	Grained Right	

**Catalogue**

Cat No.	Pr. No.	Denomination	AH	RY	Comments	Rarity
7.145	289	Rupee	1229	17/49		S
7.146	-	"	1230	17/49	Some doubt about the existence of this coin.	NR
7.147	290	Half Rupee	1229	17/49		RR



**Banāras Mint – Milled Coinages – Silver, Quarter Rupee 1815**



شاه  
عالم على  
بادشاه

1229 sikka shāh 'ālam bādshāh ghāzī (= 1229, coin of Shāh 'Ālam the victorious Emperor)



ضرب سنه  
بنارس

zarb banāras sanah 17/49 (= Struck at Banāras in year 17/49)

Official Weight (g)	2.83
Actual Weight (g)	2.83-2.85
Actual Diameter (mm)	16.6-19.2
Composition	Silver
Edge	Grained Right

**Catalogue**

Cat No.	Pr. No.	AH	RY	Comments	Rarity
7.148	-	1229	17/49		RR

**Banāras Mint – Milled Coinages – Silver, Farrukhābād Rupee and Half Rupee – 1820 to 1831**

Also issued from the mints of Calcutta, Farrukhābād and Saugor.



محمد  
الرحامى دين  
فصل شناه عالم باد  
ساسة  
زور بر نفوس المشور

sikka zad bar haft kishwar sāya fazl ilāh hāmī dīn muḥammad shāh 'ālam bādshāh [AH] (= Defender of the religion of Muḥammad, Shāh 'Ālam Emperor, Shadow of the divine favour, put his stamp on the seven climes, [AH]).



فانوس  
سنة خلوس  
ضرب فرخ ابابو

zarb farruckābād sanah 45 julūs maimanat mānūs (= Struck at Farrukhābād in the 45 year of his reign of tranquil prosperity).

	Rupee	Half Rupee
Official Weight (g)	11.68	5.84
Actual Weight (g)	11.59-11.73	?
Actual Diameter (mm)	25.4-26.7	?
Composition	Silver	
Edge	Straight Grained	

**Catalogue**

Cat No.	Pr. No.	Denomination	Comments	Rarity
7.149	323	Rupee		N
7.150	324	Half Rupee		RR

**Privy Marks**



Rupee & half rupee. Inverted V on obverse. Bead in centre of circle of dots on reverse

**Banāras Mint – Milled Coinages – Silver, Farrukhābād Quarter Rupee – 1820 to 1831**

Also issued from the mints of Calcutta, Farrukhābād and Saugor.



شاہ  
عالم علی  
بادشاہ

1204 sikka shāh 'ālam bādshāh ghāzī (= 1204, coin of Shāh 'Ālam the victorious Emperor).



ضرب سنہ  
بنارس

zarb banāras sanah 45 (= Struck at Banāras in year 45).

Official Weight (g)	2.92
Actual Weight (g)	2.91
Actual Diameter (mm)	15.6-16.9
Composition	Silver
Edge	Straight Grained

**Catalogue**

Cat No.	Pr. No.	Comments	Rarity
7.151	324A		R

**Privy Marks**



Quarter rupee.  
Inverted V on obverse  
Bead in centre of circle of dots on reverse

**Banāras Mint – Milled Coinages – Silver, Trial for Grained Edge on Farrukhābād Rupee 1822**



**New  
Milling  
1822**

Legend within a plain raised rim.



نمونہ  
ضرب  
بنارس

namūnah zarb banāras (= Pattern struck at Banāras). Within a plain, raised rim.

Actual Weight (g)	11.66
Actual Diameter (mm)	25.4
Composition	Silver
Edge	Straight Grained

**Catalogue**

Cat No.	Pr. No.	Comments	Rarity
7.152	362	Recorded from Pridmore.	RRR

**Banāras Mint – Hammered Coinages – Copper, Pice 1776 to 1806**

My thanks to Robert Johnston who provided much of the information for this listing, including the photos for the obverse and reverse varieties. Differentiating marks appear on many of the known specimens and, where visible, appear to match the marks recorded on the silver coins. Because the coins are very crude and only parts of the design on obverse and reverse are visible, fewer of the marks are usually visible, so these have been recorded differently from those on the silver coins. They occur at the top of the obverse, in the middle of the word 'Ālam. Coins with the AH date visible, are rare.



عالم شاه  
فلوس

*falūs shāh 'ālam* (= Money of Shāh 'Ālam).








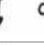
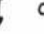


مہند محمدیاباد  
سنہ ۴۸  
زر بنارس

*zarb banāras 48* (= Struck at Banāras [year] 48). This may vary somewhat. See reverse varieties in table.

Official Weight (g)	11.96/10.64
Actual Weight (g)	11.29-12.05
Actual Diameter (mm)	15.7-22.5
Composition	Copper
Edge	Plain

Cat No.	Pr. No.	Obv	Rev	AH	RY	Differ. Marks	Comments	Rarity
7.153	-	A	I		17	A	Official weight of this and the following pice: 11.96g	RR
7.153C	-	A	II		17	A		R
7.154	294	A	II		17	B		S
7.155	-	A	II		18	B		R
7.156	295	A	II		19	B		S
7.156C	295	A	II		19	B1		R
7.156E	295	A	II		19	B2		S
7.157	-	A	II?		20	?	None known but see EIC records	NR
7.158	-	A	II?		21	?	None known but see EIC records	NR
7.159	-	A	II?		22	?	Wt. reduced to 10.64g until 1786. No lighter pice are known but see EIC records	NR
7.160	-	A	II?		23	?	None known but see EIC records.	NR
7.161	-	A	II?		24	?	None known but see EIC records.	NR
7.162	-	A	II?		25	?	None known but see EIC records.	NR
7.163	-	A	II?		26	?	None known but see EIC records.	NR
7.164	-	A	III		27	C	Wt. restored to 11.96g in 1786. AH may be under <i>falūs</i> rather than to the left as on later coins	S
7.165	-	A	III		28	C		S
7.165B	296	A	III	120x	28	D	See photos for different marks below RY – flower, three dots or no symbol. Also, AH may be under <i>falūs</i> rather than to the left as on later coins	S
7.165A	-	B	III	1201	xx	D	No fish on obverse.	R
7.165E	-	B	III	1202	30	E		S
7.166	-	B	III	1203	30	E	Ref: Noble (1995), Sale 48, lot 2147.	S
7.166A	-	B	III	1203	31	E		R
7.167	297	B	III	1208	35	E		S

7.168	-	B	III		36	E 	Ref: Baldwin (2001), sale 25 (Wiggins), lot 650.	R
7.169	-	B	III	1210	38	E 		S
7.170	-	B	III		39		Pr. Sale, lot 650.	R
7.171	-	B	III	1213	41	E 	Ref: Baldwin (2001), sale 25 (Wiggins), lot 650.	S
7.171c	-	B	III	1214	42	E 		S
7.172	-	B	III	1218	45	F 	Ref: Baldwin (2001), sale 25 (Wiggins), lot 650.	S
7.173	-	B	III	1219	46	F 		S
7.173C	-	B	III	1222	49	G 	Star in <i>sīn</i> of <i>julūs</i> on reverse	S
7.174	298	B	III	122x	49	G 	Arrow-like symbol in <i>sīn</i> of <i>julūs</i> on reverse	S
7.174C	-	B	III	1222	4P	G 	Retrograde 9 in RY.	S

### Banāras Copper Obverse Varieties

<b>Trident</b>	There may or may not be a trident
----------------	-----------------------------------

	<b>A</b>	<b>B</b>
<b>Trident</b>	Absent	Present



Obverse A. No trident



Obverse B. Trident present

### Banāras Copper Reverse Varieties

<b>Muḥammadābād</b>	The word <i>muḥammadābād</i> may appear in the top line, or may be replaced by an ornament
<b>RY</b>	The RY date may be to the right of <i>julūs</i> , in the <i>sīn</i> of <i>banāras</i> or above the <i>sīn</i> of <i>banāras</i>
<b>Trident</b>	A trident may be present or absent
<b>Symbol</b>	There may be a star or arrow-like symbol in the <i>sīn</i> of <i>banāras</i>

	<b>I</b>	<b>II</b>	<b>III</b>
<b>Muḥammadābād</b>	Top Line	Top Line	Replaced by ornament
<b>RY</b>	Right of <i>julūs</i>	In <i>sīn</i> of <i>banāras</i>	Above <i>sīn</i> of <i>banāras</i>
<b>Trident</b>	Absent	Absent	Present
<b>Symbol</b>	None	None	In <i>sīn</i> of Banāras



Reverse I.



Reverse II



Reverse III.

**Banāras Differentiating Marks for Copper Coins**



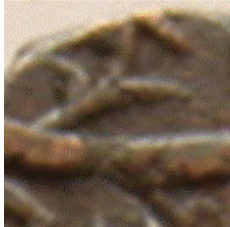
A



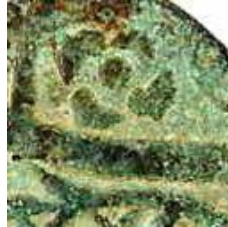
B



B1



B2



C



D



E



F



G

**Banāras Mint – Milled Coinages – Copper, Pattern Double Pice et infra 1806**

Prepared by Yeld in the Banāras Mint. See Comments.



عالم بناه  
فلوس

*falūs shāh ‘ālam* (= Money of Shāh ‘Ālam).



فرانس  
بنارس

*ẓarb banāras 48* (= Struck at Banāras [year] 48)

	Double Pice	Pice	Half Pice	Quarter Pice
Actual Weight (g)	15.35-15.61	?	?	1.97
Actual Diameter (mm)	29.8-30.5	?	?	16.1-16.2
Composition	Copper			
Edge	Plain			

**Catalogue**

Cat No.	Pr. No.	Denomination	Comments	Rarity
7.175	299	Double Pice	RJ	RRR
7.176	300	Pice	None traced	NR
7.177	301	Half Pice	None traced	NR
7.178	302	Quarter Pice		RRR

**Banāras Mint – Milled Coinages – Copper, Double Pice et infra 1809**

Struck at Calcutta for use in Banāras. None of the coins got into circulation at Banāras, although the pice were exported by shroffs from Banāras for circulation in Bihār.



شاه  
عالم بادشاه  
فلوس ۳۷  
سنه

*sanah julūs 37 shāh ‘ālam bādshāh* (= In the 37th year of the Emperor Shāh ‘Ālam).



دو پائی  
سیکھا  
۴۱۴  
۱۸۸۱

Persian: *do pai sikka.*  
Hindi: *do pai sikka.*  
(Translation = Two pai sikka).

	Double Pice	Pice	Half Pice
Official Weight (g)	12.46	6.23	3.11
Actual Weight (g)	13.12-14.46	6.54-7.29	3.02-3.09
Actual Diameter (mm)	29.5	24.7	17.5
Composition	Copper		
Edge	Plain		

**Catalogue**

Cat No.	Pr. No.	Denomination	Status	Comments	Rarity
7.179	303	Double Pice	Currency		RR
7.180	304	"	Proof	Struck from rusty dies. Wt = 14.21?	RR
7.181	305	Pice	Currency		R
7.182	306	"	Proof		RRR
7.183	307	Half Pice	Currency		R
7.184	308	"	Proof		RRR

**Banāras Mint – Milled Coinages – Copper, Pattern Pice 1813**



عالم بادشاه  
فلوس

*falūs shāh ‘ālam* (= Money of Shāh ‘Ālam).



صن  
بنارس

*zarb banāras sanah 49* (= Struck at Banāras in [year] 49).

	Double Pice	Pice
Actual Weight (g)	12.95	6.49
Actual Diameter (mm)	27.0	~20
Composition	Copper	
Edge	Plain	

**Catalogue**

Cat No.	Pr. No.	Denomination	AH	RY	Comments	Rarity
7.185	308A	Double Pice	49	1228		RRR
7.185A	-	Pice	49	1228		RRR

**Banāras Mint – Milled Coinages – Copper, Currency Pice 1815 to 1829**


sanah julūs 37 shāh 'ālam bādshāh (= in the 37th year of the Emperor Shāh 'Ālam). Trisūl.

شاه  
عالم بادشاه  
حلوس ۳۷



Persian: *yek pai sikka*.  
Hindi: *yek pai sikka*. (Translation = One pai sikka).  
Trisūl.

یک پائی  
۴۱۶

Official Weight (g)	6.23
Actual Weight (g)	4.85-6.76
Actual Diameter (mm)	Varies. See table below
Composition	Copper
Edge	Plain

**Catalogue**

Cat No.	Pr. No.	Status	Actual Diam (mm)	Comments	Rarity
7.186	309	Currency	23.2-25.1	Many different styles.	C
7.187	309	"	"	Type with raised rim.	S
7.188	310	"	20.5-23.2	Neater engraving with plain circle around design. The circle is only clear on those struck off centre.	C
7.189	311	"	26.5	As previous but larger flan.	R
7.190	312	"	21.5-24.8	Cross-bar on reverse trisūl. Exists with small flan and small letters.	C
7.191	313	Proof	23.0-24.0	Proof of previous coin.	RR
7.192	-	Token?	20.7-26.3	Countermarked with letter E. Shailen Bhandare said: The 'E' countermarked copper pice were first published as a group by Dilip Shah several years ago in ONSNL. The entire group had originated somewhere in South Mālwa. Undertypes vary.	RR