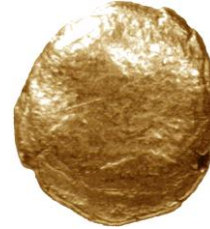


Madras Mint – Early Coinages – Gold, Pagoda c1643



Crude representation of a Hindu deity



Blank

Official Weight (g)	3.45	Actual Weight (g)	3.42	Actual Diameter (mm)	11.0-14.0	Composition	Gold
----------------------------	------	--------------------------	------	-----------------------------	-----------	--------------------	------

Catalogue

Cat No.	Pr. No.	Comments	Rarity
1.1	1	Very difficult to determine the type of this crude coin. See photos for another example.	RR

Madras Mint – Early Coinages – South Indian System – Gold, Pagoda c1678 to c1740

This was the standard gold coin of the EIC for many years. Easily confused with Dutch pagodas



A standing deity holding a sword in his left hand and surrounded by various symbols.



Granulated

Official Weight (g)	3.45	Actual Weight (g)	3.36-3.42	Actual Diameter (mm)	11.0-11.5	Composition	Gold
----------------------------	------	--------------------------	-----------	-----------------------------	-----------	--------------------	------

Catalogue

Cat No.	Pr. No.	Obv	Status	Comments	Rarity
1.2	2	A	Currency	Single, standing figure of Vishnu. See photos for one with a flat reverse (maybe St 1.1?)	R
-		B	Brass Forgery	Very crude single standing figure. 2.18g	NR
-		C	Brass Forgery	Very good design of single standing figure. 2.97g	NR

Obverse Varieties

Shape of Figure	The shape of the figure varies
------------------------	--------------------------------

	A	B	C
Shape of Figure	Normal	Squat figure - Forgery	Fairly normal figure - Forgery



A – Normal figure



B – Squat figure



C – Fairly normal figure

Madras Mint – Early Coinages – Gold, Three Swami Pagoda 1691 to 1806



Three standing figures, each with a star above their head.



Granulated

	Pagoda	Half Pagoda	Quarter Pagoda
Official Weight (g)	3.43	1.71	0.85
Actual Weight (g)	3.43-3.46	1.68	0.85
Actual Diameter (mm)	11.2-13.0	10	8
Composition	Gold		

Catalogue

Cat No.	Pr. No.	Denomination	Obv	Date Issued	Comments	Rarity
1.3	3A	Pagoda	A	c1691-1740	Full figures	R
1.4	3B	Pagoda	B	1740-1806	Half figures	C
1.5	4	Half Pagoda	A	c1691-1740	BM. Possibly jeweller's copy	RRR
1.6	5	Quarter Pagoda	A	"	BM. Possibly jeweller's copy	RRR

Obverse Varieties

Size of Figures	The complete figures may be visible or only half
------------------------	--

	A	B
Size of Figures	Full	Half



A – Full figures



B – Half figures

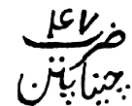
Madras Mint – Early Coinages – Gold Ālamgīr, Pagoda 1692 to 1707



niṣār bādshāh 'ālamgīr (= The gift of the Emperor 'Ālamgīr).



zarb chīnāpātan (= Struck at Chīnāpātan)



Official Weight (g)	2.98	Actual Weight (g)	2.98-2.99	Actual Diameter (mm)	10.8-11.3	Composition	Gold
----------------------------	------	--------------------------	-----------	-----------------------------	-----------	--------------------	------

Catalogue

Cat No.	Pr. No.	AH	RY	Comments	Rarity
1.7	6	1103	35	Ref: BM	RRR
1.8	-	1111	?	Ref: BM.	RRR
1.9	7	1113	47	AH may be 1114	RRR

Madras Mint – Early Coinages – Gold, MM Pagoda 1730 to 1735



Indicative Picture – No specimen available
A single standing deity with the letter M on each side.



Indicative Picture – No specimen available
Granulated

Official Weight (g)	3.41?	Actual Weight (g)	?	Actual Diameter (mm)	~11.5?	Composition	Gold
----------------------------	-------	--------------------------	---	-----------------------------	--------	--------------------	------

Catalogue

Cat No.	Pr. No.	Comments	Rarity
1.10	8	Not traced	NR

Madras Mint – Early Coinages – Gold, Star Pagoda 1740 to 1806



Half a standing figure with dots on each side.



A Star surrounded by dotted circles.

Actual Weight (g)	3.32-3.40	Actual Diameter (mm)	10.0-12.7	Composition	Gold
--------------------------	-----------	-----------------------------	-----------	--------------------	------

Catalogue

Cat No.	Pr. No.	Obv	Rev	Comments	Rarity
1.11	9	A	I		S
1.12	-	A	II	Ref: Wiggins.	S
-	10	B	I	Forged 'star' Pagoda in brass.	NR
1.13	-	C	I	Ref: Hemanth Chopra Full figure on obverse. Small star on reverse looks very different from usual. Perhaps a local copy?	NR

Obverse Varieties

Design	The design may vary. Normally there is only part of the figure of Vishnu visible. Rarely there is the whole figure visible. Forgeries have all sorts of crude figures.
---------------	--

	A	B	C
Design	Normal	Crude figure and many dots each side - Forgery	Full figure



A – Normal design



B – Crude design on typical contemporary forgery



C – Full standing figure (Photo from Hemanth Chopra)

Reverse Varieties

Star within	The star is normally held within a circle of dots. Sometimes the dots are arranged in the shape of a pentagon rather than a circle
--------------------	--

	I	II
Star within	Circle	Pentagon



A – Star within Circle



B – Star within Pentagon



Obverse of Pentagon Style Coin

Madras Mint – Early Coinages – Gold, Fanam c1643 to 1693



A single standing deity (Vishnu) within a beaded border



Not deciphered.

Official Weight (g)	?	Actual Weight (g)	0.27	Actual Diameter (mm)	7	Composition	Gold
----------------------------	---	--------------------------	------	-----------------------------	---	--------------------	------

Catalogue

Cat No.	Pr. No.	Comments	Rarity
1.14	11	None traced. Many South Indian gold fanams that resemble this design exist. See Photo for example.	NR

Madras Mint – Early Coinages – Silver Fanam (Trial Strike??)



Full standing figure of Vishnu within a beaded border. Around this is a Telugu inscription



Two interlinked Cs within a plain border. All surrounded by a Telugu inscription within a beaded border.

Actual Weight (g)	1.27	Actual Diameter (mm)		Composition	Silver
--------------------------	------	-----------------------------	--	--------------------	--------

Catalogue

Cat No.	Pr. No.	Denomination	Comments	Rarity
1.14C	-	Fanam?	The status of this piece is not known. Is it an early trial for the fanam coinage, or should it come later in the series?	RRR

Madras Mint – Early Coinages – Silver, Two, One & Half Fanams 1689



Full standing figure of Vishnu within a beaded border



Two interlinked Cs the ends of one separated by the figure 1. Within a beaded border.

	Double Fanam	Fanam	Half Fanam
Official Weight (g)	2.46	1.23	0.62
Actual Weight (g)	?	0.89-1.03	-
Actual Diameter (mm)	~12	8.5-10.3	~8
Composition	Silver		

Catalogue

Cat No.	Pr. No.	Denomination	Comments	Rarity
1.15	12	Double fanam	Two strokes between the ends of the C. Private collection.	RRR
1.16	13	Single fanam		RR
1.17	14	Half fanam	None traced	NR

Madras Mint – Early Coinages – Silver, Fanam *et infra* 1690 to 1763



Full standing figure of Vishnu, within a beaded border.



Two interlinked Cs, with one, two or three dots. Surrounded by a beaded border.

	Double Fanam	Fanam	Half Fanam
Official Weight (g)	2.07	1.03	0.51
Actual Weight (g)	1.89-2.08	1.00-1.05	0.48
Actual Diameter (mm)	9.1-11.3	7.8-9.4	7.1-7.9
Composition	Silver		

Catalogue

Cat No.	Pr. No.	Denomination	Obv	Rev	Comments	Rarity
1.18	15	Double fanam	A	I	Three dots on reverse.	S
1.19	-	"	A	II	Two dots on Reverse. Usually only one visible.	S
1.20	-	"	B	II	Same weight but cruder design (as later issue). Only one dot visible on specimens examined, but could be two on specimens showing full die impression.	R
1.21	16	Single fanam	A	III	One dot on reverse.	S
1.22		"	A	IV	Two dots on reverse. One in centre and one between ends of C. Reported by Wiggins.	S
-	-	Single Fanam Forgery	A	III	Very crude figure.	RRR
1.23	17	Half fanam	A	?	The ANS apparently has one, Ref: 1973.56.1232	NR

Obverse Varieties

Shape of Figure	The shape of the figure varies. Normally a full figure is visible. On some coins a cruder figure is shown and is only partially visible.
------------------------	--

	A	B
Shape of Figure	Normal	Cruder



A – Normal figure



B – Cruder figure



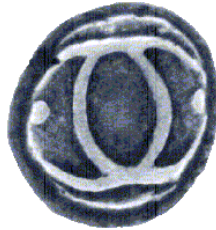
C – Forgery

Reverse Varieties

	Dots		There may be three, two or one dots visible	
	I	II	III	IV
Dots	Three	Two. Between ends of each C	One	Two. One in centre & one between ends of C



I – Three Dots (Double Fanam)



II – Two Dots (Double Fanam)



III – One Dot (Single Fanam)

No Photo Available

IV – Two Dots (Fanam)

Madras Mint – Early Coinages – Silver, Two & One Fanams 1764 to 1806



Partial standing figure of Vishnu (crude compared with 1st & 2nd issues). Within a beaded border.



Two interlinked Cs, one end separated by a dot, which is often not visible. Surrounded by a beaded border.

	Double Fanam	Single Fanam	Half Fanam
Official Weight (g)	1.83	0.91	
Actual Weight (g)	1.65-1.88	0.80-0.96	0.52
Actual Diameter (mm)	7.4-11.1	7.0-7.9	~7
Composition	Silver		

Catalogue

Cat No.	Pr. No.	Denomination	Comments	Rarity
1.24	18	Double fanam		C
1.25	19	Single fanam		C
1.25C	-	Half fanam	Wt ~0.5g. Not certain if this is a half or a very light single fanam	NR



Double Fanam Example showing bead on Reverse



Double Fanam Example showing beaded border on Obverse



Double Fanam Example showing beaded border on Reverse

Madras Mint – Early Coinages – Copper, Ten Cash (Dudu) 1691 to 1754



Bailemark with GCE within a decorative stroke border



Date between wavy lines within a beaded circle

Official Weight (g)	8.85	Actual Weight (g)	7.66-8.79	Actual Diameter (mm)	13.7-22.0	Composition	Copper
----------------------------	------	--------------------------	-----------	-----------------------------	-----------	--------------------	--------

Catalogue

Cat No.	Pr. No.	Date	Comments	Rarity
1.26	20	1691	Manchester Museum	RRR
1.27	21	1693		RR
1.28	22	1695		R
1.28C	-	1700	Ref: Hemanth Chopra	RRR
1.29	24	1702		R
1.30	25	1703		RR
1.31	28	1704	4 shaped like y. Could be 9. Example in BM.	R
1.32	26	1705	Noble sale 48, lot 1986 (1995). Not examined	R
1.33	27	1706		S
1.34	29	1716		R
1.35	30	1720	Ashmolean museum	RRR
1.36	31	1721	Manchester Museum. ANS	RRR
1.37	32	1722		N
1.38	33	1725	Not examined.	NR
1.39	34	1726		RR
1.40	35	1728	See photo from Jan Lingen	RRR
1.41	36	1731	None traced, Recorded from Pridmore.	NR
1.42	37	1739		RR
1.43	38	1741		RR
1.44	39	1744		R
1.45	40	1745	Not examined	NR

See also Fort St David mint for dudus struck 1748-1752

Madras Mint – Early Coinages – Copper, Ten Cash (Dudu) 1755 to 1806



Balemark containing GCE within a wavy line circle.



Date between wavy lines and within a circle.

Official Weight (g)	6.30	Actual Weight (g)	5.06-6.36	Actual Diameter (mm)	11.9-19.0	Composition	Copper
----------------------------	------	--------------------------	-----------	-----------------------------	-----------	--------------------	--------

Catalogue

Cat No.	Pr. No.	Date	Comments	Rarity
1.46	45	1755		S
1.47	46	1756		N
1.48	-	1758	Ref: Baldwin, sale 84, lot 2021 (but no photo).	R
1.49	47	1761		S
1.50	48	1765	Ref: Wiggins.	R
1.51	49	1768		S
1.52	50	1769		S
1.53	51	1774		S
1.54	-	1776	Ref: Puddester.	RRR
1.55	52	1777	Ref: Wiggins, Puddester.	S
1.56	-	1778	Ref: Puddester.	RRR
1.57	53	1780	Ref: Snartt (1980). SCMB pp279-280.	RR
1.58	54	1784		N
1.59	55	1786		S
1.60	56	1787	None traced. Recorded from Pridmore.	NR
1.61	57	1788	None traced. Recorded from Pridmore.	NR
1.62	58	1789	Ref: Puddester, Wiggins.	RR
1.63	59	1790	None traced. Recorded from Pridmore.	NR
1.63C	-	1791	Date not certain but likely.	NR
1.64	60	1795		RR
1.65	61	1796	Ref: Snartt (1980). SCMB pp. 279-280.	RR
1.66	62	1798	None traced. Recorded from Pridmore.	NR
1.67	63	1800		RR
1.68	64	1801		N
1.69	65	1806	None traced. Recorded from Pridmore.	NR

Madras Mint – Early Coinages – Copper, Five Cash (Half Dudu) 1691 to 1754



Balemark with GCE within a beaded border.

Date in one or two lines within a plain raised circle.

Official Weight (g)	4.43	Actual Weight (g)	3.73-4.22	Actual Diameter (mm)	12.1-15.5	Composition	Copper
----------------------------	------	--------------------------	-----------	-----------------------------	-----------	--------------------	--------

Catalogue

Cat No.	Pr. No.	Date	Rev	Comments	Rarity
1.70	66	1691	I		RR
1.71	67	1699	I	Not traced. Recorded from Pridmore.	NR
1.72	23&68	1700	II	Date in one line.	RR
1.73	69	1702	I		NR
1.74	70	1705	I	NB shape of 5 shown in photo above	RR
1.75	-	1706	I	Ref: Lingen	RRR
1.76	71	1720	I	Not traced. Recorded from Pridmore	NR
1.76C	-	1721	I		RR
1.77	-	1722 or 1723	I	Ref: Lingen. Date not clear	RRR
1.78	72	1726	I		RR
1.79	73	1737	I	Not traced. Recorded from Pridmore	NR
1.80	74	1739	I	Ref: Wiggins	RRR
1.81	75	1742	I	Not traced. Recorded from Pridmore	NR
1.81c	-	1746	I		NR

Reverse Varieties

Date	The date may be in one line, or split between two lines.
-------------	--

	I	II
Date	Two lines	One Line



I – Date in two lines



II – Date in one line

Madras Mint – Early Coinages – Copper, Five Cash (Half Dudu) 1755 to 1806



Bailemark with GCE within a beaded border.



Date in two lines

Official Weight (g)	3.15	Actual Weight (g)	2.65-3.14	Actual Diameter (mm)	10.5-13.6	Composition	Copper
----------------------------	------	--------------------------	-----------	-----------------------------	-----------	--------------------	--------

Catalogue

Cat No.	Pr. No.	Date	Comments	Rarity
1.82	76	1755		R
1.83	-	1757	Ref: Thompson.	RR
1.84	77	1758	Not traced. Recorded from Pridmore.	NR
1.85	78	1761	Ref: Wiggins.	RR
1.86	79	1768	Ref: Wiggins.	RR
1.87	-	1776	Manchester Museum.	RRR
1.88	80	1777		RR
1.89	-	1778	Manchester Museum.	RRR
1.90	-	1781	Ref: Wiggins.	RR
1.91	81	1784		RR
1.92	82	1785	Ref: Wiggins.	RR
1.93	83	1786		R
1.94	84	1790	Not traced. Recorded from Pridmore.	NR
1.95	85	1791	Ref: Puddester.	RR
1.96	86	1802	Not traced. Recorded from Pridmore.	NR
1.97	87	1804	Not traced. Recorded from Pridmore.	NR

Madras Mint – Early Coinages – Copper, Cash – 1660 to 1678



Outline of the bailemark of the Company.



Telugu inscription. Translation *Sri Ranga*. A title of the Vijayanagar empire.

Official Weight (g)	0.53	Actual Weight (g)	0.36-0.70	Actual Diameter (mm)	5.7-7.4	Composition	Copper
----------------------------	------	--------------------------	-----------	-----------------------------	---------	--------------------	--------

Catalogue

Cat No.	Pr. No.	Rev	Comments	Rarity
1.98	89	I	Reverse often difficult to distinguish.	RRR
1.99	90	II		RRR

Varieties exist without the lower bar in the bailemark. See ANS website.

Reverse Varieties

Telugu Inscription | May be Normal or a Variety with the letters of the legend in the wrong order.

	I	II
Telugu Inscription	Normal	Variety



I – Normal inscription



II – Transposed inscription

Madras Mint – Early Coinages – Copper, Great Cash et infra – 1678 to 1680

A new style of cash coin was issued in 1678 with a weight of 9.11 troy grains. There appear to be three denominations.



Baemark within a dotted circle.



Telugu inscription. *Sri Ranga* in two lines . Possibly a royal title.



	Treble Cash	Double Cash	Cash
Official Weight (g)	1.77	?	0.59
Actual Weight (g)	1.46-1.68	1.18	0.61-0.62
Actual Diameter (mm)	8.5-9.7	9.5-10.8	7.6-10.6
Metal	Copper		

Catalogue

Cat No.	Pr. No.	Denomination	Comments	Rarity
1.100	88	Three (Great) Cash	Very rare. See also ANS 1919.999.133	RRR
1.101	-	Two Cash		RR
1.102	91	Cash		R

Madras Mint – Early Coinages – Copper, Two Cash et infra – 1678 to 1722



Baemark with date. Surrounded by a beaded circle.



Sri Ranga. A title of the Vijayanagara empire.

	2 Cash	Cash
Official Weight (g)	1.66?	0.88
Actual Weight (g)	1.57-1.66	0.64-0.82
Actual Diameter (mm)	9.5-10.8	7.1-9.0
Metal	Copper	

Catalogue

Cat No.	Pr. No.	Denomination	Date	Obv	Rev	Comments	Rarity
1.103	-	Two Cash	[16]78	A	I		RR
1.104	-	"	[16]78	A	II		RR
1.105	92	Cash	[16]78	A	II	See photos for one with a strangely written date	R
1.106	-	"	[61]87	A	?	(1678) Fitzwilliam Museum. BM. Appears to be 78 retrograde.	RRR
1.107	-	"	1691	?	?	Fitzwilliam Museum.	RRR
1.108	-	"	1697	C	II		RRR
1.109	93	"	1698	B	II		RR
1.110	94	"	1698	B	III		RR
1.111	-	"	1698	C	II		RR
1.112	-	"	1700	C	?		RR
1.113	95	"	1702	C	III		R
1.114	-	"	1703			Ref: Wiggins.	RR
1.115	-	"	1704	C	III	Numeral 4 shaped like a Y as on 1 st issue dudus.	RR
1.116	96	"	1705	C	III	Figure 5 same shape as on half dudu.	RR
1.117	-	"	1708	?	?	Fitzwilliam Museum.	RRR
1.118	-	"	1722	C	III	ANS 1919.60.226.	RRR

Obverse Varieties

Design	The design may consist of a balemark with the date in the lower half and the top half empty, the date in two lines in a plain circle, or a balemark with the date divided between the top and bottom.
---------------	---

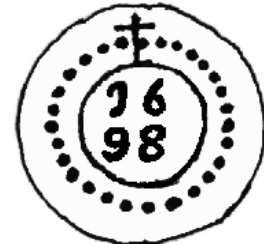
	A	B	C
Design	Date in lower half	No balemark	Full date in balemark



A – Date in lower half



B – Date with no balemark



C – Full date in balemark



Reverse Varieties

Title	The bottom part of the title may be spelt in the correct way with the dot in the middle, or mis-spelt with the dot at the beginning.
--------------	--

	I	II	III
Title	No Oval	Mis-spelt	Correct



I – No Oval



II – Mis-spelt



III – Correct



Madras Mint – Early Coinages – Copper, Cash – 1725 to c1752



A heart shaped shield with a 4 on top. Triply divided. In each third is a letter E I C. A wavy line above. All within a beaded border?



Date within a dotted circle.

Official Weight (g)	1.20	Actual Weight (g)	1.07-1.95	Actual Diameter (mm)	7.4-11.0	Composition	Copper
----------------------------	------	--------------------------	-----------	-----------------------------	----------	--------------------	--------

Catalogue

Cat No.	Pr. No.	Date	Obv	Comments	Rarity
1.119	-	1725	A	Ref: Lingen	RR
1.120	97	1731	A	Specimens exist with a bar across the 7.	S
1.121	98	1733	A	Probably the most common date.	C
1.122	99	1734	A		RR
1.123	100	1736	A		R
1.124	-	1737	A		R
1.125	101	1737	B		S
1.126	102	1739	A		RR
1.126A	-	1739	B		RR
1.127	-	1740	A		RR

See also Fort St David mint for cash struck 1748-1752

Obverse Varieties

Letters in balemark | The letters in the balemark may be arranged clockwise or anti-clockwise.

	A	B
Letters in balemark	Clockwise	Anti-clockwise



A – Letters Clockwise



B – Letters Anticlockwise

Madras Mint – Early Coinages – South Indian System – Lead, Cash – 1787/88

Mitchiner attributes a lead coin to the British EIC on the basis of the Sri Ranga title combined with a date. However this is NOT an EIC coin. See Mitchiner No.1816

Madras Mint – Early Coinages – Copper, Single and Half Pice – 1803 to 1807

Given the number of error coins amongst the half pice specimens, one might speculate whether they are all actually light-weight forgeries of the pice denomination. A better example of a half pice coin with a clear, correct balemark might help decide this debate.



Balemark within a plain circle



Date within a plain circle

	Pice	Half Pice
Actual Weight (g)	2.11-2.85	0.88-1.20
Actual Diameter (mm)	10.6-13.2	7.5-10.6
Composition	Copper	

Catalogue

Cat No.	Pr. No.	Denomination	Date	Comments	Rarity
1.128	319	Pice	1803		S
1.129	-	"	1804		RR
1.130	320	"	1807		S
1.131	321	Half Pice	1803	Not certain that any examples have a balemark with the letters correct	R
1.131A	-	"	1803	Letters in balemark retrograde	R
1.131B	-	"	8803	Date presumably an error for 1803	R
1.132	-	"	1808	Ref: Puddester.	RRR