

Baroda – Baroda Mint, Govind Rao, INO Shāh ‘Ālam II – Silver



Actual Weight (g)

Actual Diameter (mm)

Composition Silver

Catalogue

Cat No.	KM	Denomination	AH	RY	Comments	Rarity
BD 80	-	Rupee	xxxx	2?		RRR

Baroda – Baroda Mint, Fath Singh, INO Shāh ‘Ālam II – Copper

No Photo
Available

No Photo
Available

Actual Weight (g)

Actual Diameter (mm)

Composition Copper

Catalogue

Cat No.	KM	Denomination	AH	RY	Comments	Rarity
BD 82	A33.16	Half Pice				R

Baroda – Baroda Mint, Manaji Rao, INO Shah Alam II – Silver



	Rupee	Half Rupee
Actual Weight (g)	<input type="text"/>	<input type="text"/>
Actual Diameter (mm)	<input type="text"/>	<input type="text"/>
Composition	Silver	

Catalogue

Cat No.	KM	Denomination	AH	RY	Comments	Rarity
BD 84	A17	Rupee	xxxx	3		
BD 85		"	xxxx	4		
BD 86	14	Half Rupee	xxxx	2		
BD 87		"	xxxx	4		

Baroda – Baroda Mint, INO Muhammad Akbar II – Silver



	Rupee	Half Rupee	Quarter Rupee	Eighth Rupee
Actual Weight (g)				
Actual Diameter (mm)				
Composition	Silver			

Catalogue

Cat No.	KM	Denomination	AH	RY	Comments	Rarity
BD 90	27	Rupee	1222	2		
BD 91		"	1224	4		
BD 92		"	1225	5		
BD 93		"	1226	6	One with a different symbol below <i>julus</i> . See photos.	
BD 94		"	1227	6		
BD 95		"	1227	7		
BD 96		"	1228	8		
BD 97		"	1229	9		
BD 98		"	1232	12		
BD 99		"	1233	13		
BD 100		"	1234	14		
BD 101	26	Half Rupee	1222	2		
BD 102		"	1225	5		
BD 103		"	1226	6		
BD 104		"	1228	8		
BD 105		"	1230	x		
BD 106		"	1232	x		
BD 107		"	12xx	13		
BD 108		"	1234	14		
BD 109	25	Quarter Rupee	1228	xx		
BD 110	24	Eighth Rupee	122x	xx		
BD 111		"	1233	xx		
BD 112		"	1234	xx		

Baroda – Baroda Mint, Anand Rao, INO Muhammad Akbar II – Copper – Type 1

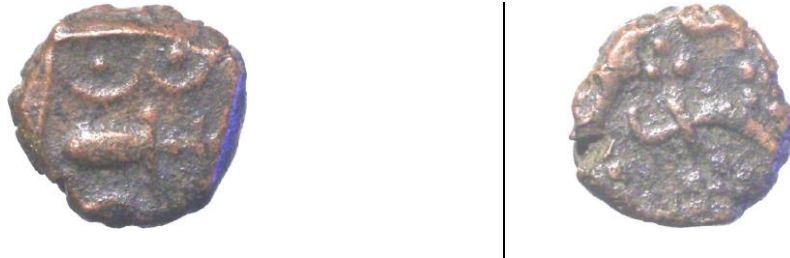


	Pice	Half Pice
Actual Weight (g)		
Actual Diameter (mm)		
Composition	Copper	

Catalogue

Cat No.	KM	Denomination	AH	RY	Comments	Rarity
BD 115	21	Pice	1226	6		
BD 116		"	1227	7		
BD 117		"	1228	8		
BD 118		"	122x	9		
BD 119		"	1231	11		
BD 120		"	1233?	13		
BD 121		"	1234	14		
BD 122		"	1236	16		
BD 123	20	Half Pice	1232	11		
BD 124		"	123x	14		

Baroda – Baroda Mint, Anand Rao, Anonymous – Copper – Type 2

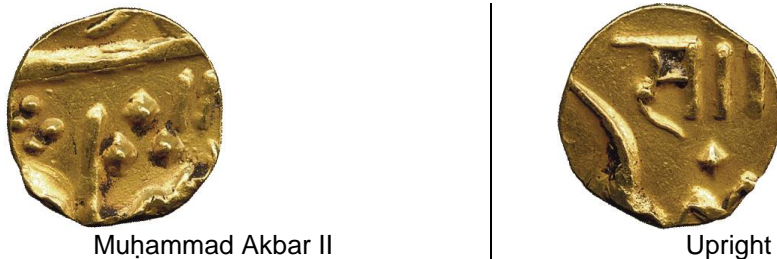


Actual Weight (g)		Actual Diameter (mm)		Composition	Copper
--------------------------	--	-----------------------------	--	--------------------	--------

Catalogue

Cat No.	KM	Denomination	AH	RY	Comments	Rarity
BD 126	-	Half Pice	xxxx			

Baroda – Baroda Mint, Sayaji Rao II, Gold



Muhammad Akbar II

Upright sword

Actual Weight (g)	1.92	Actual Diameter (mm)		Composition	Gold
--------------------------	------	-----------------------------	--	--------------------	------

Catalogue

Cat No.	KM	Denomination	AH	RY	Comments	Rarity
BD 130	-	Third Mohur	12xx	xx		RR

**Baroda – Baroda Mint – Sayaji Rao II, INO Muhammad Akbar II – Silver
– Type 1, Scimitar to left of *julus***



	Rupee	Half Rupee	Quarter Rupee	Eighth Rupee
Actual Weight (g)				
Actual Diameter (mm)				
Composition	Silver			

Catalogue

Cat No.	KM	Denomination	AH	RY	Comments	Rarity
BD 132	38.1	Rupee	1237	17		
BD 133		"	1238	18		
BD 134		"	1239	19		
BD 135		"	1240	19		
BD 136		"	1240	20		
BD 137		"	1241	21		
BD 138		"	1242	22		
BD 139		"	124x	27		
BD 140	37.1	Half Rupee	1238	18		
BD 141		"	1239	19		
BD 142		"	12xx	20		
BD 143		"	1239	19		
BD 144		"	1241	21		
BD 145		"	124x	27		
BD 146	36.1	Quarter Rupee	1238	18		
BD 147	35.1	Eighth Rupee	1237	17		

**Baroda – Baroda Mint – Sayaji Rao II, INO Muhammad Akbar II – Silver
– Type 2, Scimitar above *julus***



	Rupee	Half Rupee
Actual Weight (g)		
Actual Diameter (mm)		
Composition	Silver	

Catalogue

Cat No.	KM	Denomination	AH	RY	Comments	Rarity
BD 150	38.2	Rupee	1244	24		
BD 151		"	1245	25		
BD 152		"	1248	28	KM has the date 1247/28 so this might exist as well	
BD 153	37.2	Half Rupee	1248	27		

**Baroda – Baroda Mint – Sayaji Rao II, INO Muhammad Akbar II – Silver
– Type 3, Scimitar to right of *julūs***



	Rupee	Half Rupee	Quarter Rupee	Eighth Rupee
Actual Weight (g)				
Actual Diameter (mm)				
Composition	Silver			

Catalogue

Cat No.	KM	Denomination	AH	RY	Comments	Rarity
BD 155	38.3	Rupee	1247	xx		
BD 156		"	1249	29		
BD 157		"	1250	30		
BD 158		"	1251	32		
BD 159		"	1253	33		
BD 160		"	1254	33		
BD 161		"	12xx	34		
BD 162		"	1255	35		
BD 163		"	1256	36		
BD 164		"	1257	37		
BD 165		"	1258	38		
BD 166		"	1259	39		
BD 167		"	1260	40		
BD 168	37.3	Half Rupee	12xx	30		
BD 169		"	1250	xx		
BD 170		"	1253	33		
BD 171		"	1254	33		
BD 172		"	125x	35		
BD 173		"	125x	37		
BD 174		"	125x	38		
BD 175		"	125x	39		
BD 176		"	1260	40		
BD 177		"	126x	42		
BD 178	36.3	Quarter Rupee	1249	29		
BD 179		"	1250	29		
BD 180		"	1257	37		
BD 181		"	1262	xx		
BD 182	35.3	Eighth Rupee	xxxx	35		
BD 183		"	125x	37		
BD 184		"	1260			

**Baroda – Baroda Mint – Sayaji Rao II, INO Muhammad Akbar II –
Copper – Type 1, No Symbol**



	Pice	Half Pice
Actual Weight (g)		
Actual Diameter (mm)		
Composition	Copper	

Catalogue

Cat No.	KM	Denomination	AH	RY	Comments	Rarity
BD 187	33.1	Pice	1236	16		
BD 188	31.1	Half Pice	123x	xx		

**Baroda – Baroda Mint – Sayaji Rao II, INO Muhammad Akbar II –
Copper – Type 2, Accented Outline Cross**



Actual Weight (g)		Actual Diameter (mm)		Composition	Copper
-------------------	--	----------------------	--	-------------	--------

Catalogue

Cat No.	KM	Denomination	AH	RY	Comments	Rarity
BD 190	33.2	Pice	1241	20		

**Baroda – Baroda Mint – Sayaji Rao II, INO Muhammad Akbar II –
Copper – Type 3, Simple Outline Cross**

No Photo
Available

No Photo
Available

	Pice	Half Pice
Actual Weight (g)		
Actual Diameter (mm)		
Composition	Copper	

Catalogue

Cat No.	KM	Denomination	AH	RY	Comments	Rarity
BD 195	33.3	Pice	1243	23		
BD 196		"	1244			
BD 197	31.2	Half Pice	1236	16	May have the other type of cross. KM not very clear	

**Baroda – Baroda Mint – Sayaji Rao II, INO Muhammad Akbar II –
Copper – Type 4, Rayed Sun**



	Pice	Half Pice
Actual Weight (g)		
Actual Diameter (mm)		
Composition	Copper	

Catalogue

Cat No.	KM	Denomination	AH	RY	Comments	Rarity
BD 199	33.4	Pice	124x	23		
BD 200		"	1247	27		
BD 201	31.4	Half Pice	xxxx	xx		

**Baroda – Baroda Mint – Sayaji Rao II, INO Muhammad Akbar II –
Copper – Type 5, Flag**

No Photo
Available

No Photo
Available

	Pice	Half Pice
Actual Weight (g)		
Actual Diameter (mm)		
Composition	Copper	

Catalogue

Cat No.	KM	Denomination	AH	RY	Comments	Rarity
BD 203	33.5	Pice	12xx	28		
BD 204		"	1249	29		
BD 205		"	1250	30		
BD 206		"	1251	xx		
BD 207		"	1253	xx		
BD 208	31.5	Half Pice	1251	xx		

**Baroda – Baroda Mint – Sayaji Rao II, INO Muhammad Akbar II –
Copper – Type 6, Upright Cross**

No Photo
Available

No Photo
Available

Actual Weight (g) Actual Diameter (mm) Composition Copper

Catalogue

Cat No.	KM	Denomination	AH	RY	Comments	Rarity
BD 210	33.6	Pice	1255	35		

**Baroda – Baroda Mint – Sayaji Rao II, INO Muhammad Akbar II –
Copper – Type 7, Five-Petalled Flower**



Actual Weight (g) Actual Diameter (mm) Composition Copper

Catalogue

Cat No.	KM	Denomination	AH	RY	Comments	Rarity
BD 212	33.7	Pice	xxxx	35		
BD 213		"	1255	36		
BD 214		"	1256	36		
BD 215		"	1263	xx		

**Baroda – Baroda Mint – Sayaji Rao II, In the Name of Muhammad Akbar II –
Copper – Type 8, Shaded Ball**



	Pice	Half Pice
Actual Weight (g)		
Actual Diameter (mm)		
Composition	Copper	

Catalogue

Cat No.	KM	Denomination	AH	RY	Comments	Rarity
BD 217	33.8	Pice	1260	40		
BD 218		"	1261	41		
BD 219		"	1262	xx		
BD 220		"	1263	43		
BD 221		"	126x	44		
BD 222		"	1264	xx		
BD 223	31.8	Half Pice	1260	40		

**Baroda – Baroda Mint – Sayaji Rao II, INO Muhammad Akbar II –
Copper – Type 9, Tulip**



Actual Weight (g)

Actual Diameter (mm)

Composition Copper

Catalogue

Cat No.	KM	Denomination	AH	RY	Comments	Rarity
BD 225	33.9	Pice	1264	xx		

**Baroda – Baroda Mint – Sayaji Rao II, INO Muhammad Akbar II –
Copper – Type 10, Hoof**



Actual Weight (g)

Actual Diameter (mm)

Composition Copper

Catalogue

Cat No.	KM	Denomination	AH	RY	Comments	Rarity
BD 226		Pice	1264	xx		

**Baroda – Baroda Mint – Sayaji Rao II, INO Muhammad Akbar II –
Copper – Type 11, Flag and Branch**



Actual Weight (g)

Actual Diameter (mm)

Composition Copper

Catalogue

Cat No.	KM	Denomination	AH	RY	Comments	Rarity
BD 227	33.11	Pice	1248?	28?		

**Baroda – Baroda Mint – Sayaji Rao II, INO Muhammad Akbar II –
Copper – Type 12, Flower**

No Photo
Available

No Photo
Available

Actual Weight (g)

Actual Diameter (mm)

Composition Copper

Catalogue

Cat No.	KM	Denomination	AH	RY	Comments	Rarity
BD 228		Pice	1264	xx		

**Baroda – Baroda Mint – Sayaji Rao II, INO Muhammad Akbar II –
Copper – Type 13, Persian**

No Photo
Available

No Photo
Available

Actual Weight (g)

Actual Diameter (mm)

Composition Copper

Catalogue

Cat No.	KM	Denomination	AH	RY	Comments	Rarity
BD 230		Pice	1264	xx		

**Baroda – Baroda Mint – Sayaji Rao II, INO Muhammad Akbar II –
Copper – Type 14, Accented Cross Outline**



Not sure that I have illustrated the correct type here

Actual Weight (g)

Actual Diameter (mm)

Composition Copper

Catalogue

Cat No.	KM	Denomination	AH	RY	Comments	Rarity
BD 231		Pice	1264	xx		

**Baroda – Baroda Mint – Sayaji Rao II, INO Muhammad Akbar II –
Copper – Type 15, Fateh Singh**

Actual Weight (g) Actual Diameter (mm) Composition Copper

Catalogue

Cat No.	KM	Denomination	AH	RY	Comments	Rarity
BD 232	33.16	Pice	1245	xx		

Baroda – Baroda Mint – Ganpat Rao, – Gold

This coin is unique and unusual in many respects: firstly, it is the earliest coin of any Gaikwad ruler to be struck in his own name. Secondly, it is also the earliest instance of a Baroda coin dated in the regnal era of the Gaikwad ruler, rather than that of the Mughal Emperor and thirdly, it remarkably imitates a coin-design of another state, Jaipur. The years on the coin correspond to 1852-53AD. For a few years before this, a feud between Bhau Tambekar, the prime minister of the state and Col. James Outram, the British resident had been brewing. The prime minister had the backing of the Maharaja. In 1853, it was resolved that the affairs of Baroda State were to be managed directly from Calcutta, instead of Bombay and Col. Outram was forced to resign. It is not certain if this episode might have prompted the prime minister to issue special coins in the Maharaja's name, but it remains a plausible option. (from Zeno)



Farsi legend *Ganpat Rav Gayakwad Sena*
Khas Khel Samsher Bahadur, [AH]

zarb baroda sanah [RY] julūs maimanat
mānūs

Actual Weight (g) Actual Diameter (mm) Composition Gold

Catalogue

Cat No.	KM	Denomination	AH	RY	Comments	Rarity
BD 235	-	Mohur	1269	5		RRR

Baroda – Baroda Mint – Ganpat Rao, INO Muhammad Akbar II – Silver



	Rupee	Half Rupee	Quarter Rupee	Eighth Rupee
Actual Weight (g)				
Actual Diameter (mm)				
Composition	Silver			

Catalogue

Cat No.	KM	Denomination	AH	RY	Comments	Rarity
BD 236	47	Rupee	1264	43		
BD 237		"	1265	44		
BD 238		"	xxxx	45		
BD 239		"	126x	46		
BD 240		"	1268	47		
BD241		"	1271	50		
BD 242		"	1272	51		
BD 243		"	1272	52		
BD 244	46	Half Rupee	xxxx	44		
BD 245		"	1267	xx		
BD 246		"	1271	xx		
BD 247		"	1272	xx		
BD 248	45	Quarter Rupee	126x	xx		
BD 249	44	Eighth Rupee	126x	xx		

Baroda – Baroda Mint – Ganpat Rao, INO Muhammad Akbar II – Copper



Actual Weight (g)		Actual Diameter (mm)		Composition	Copper
-------------------	--	----------------------	--	-------------	--------

Catalogue

Cat No.	KM	Denomination	AH	RY	Comments	Rarity
BD 251	42	Pice	1263	43		
BD 252		"	1264	44		
BD 253		"	1265	45		
BD 254		"	1266	46		
BD 255		"	1272	52		

**Baroda – Baroda Mint – Ganpat Rao, INO Muhammad Akbar II –
Copper**

Actual Weight (g) Actual Diameter (mm) Composition

Catalogue

Cat No.	KM	Denomination	AH	RY	Comments	Rarity
BD 257	43	Pice	1264	44	Only either RY or AH on my specimens, not both	
BD 258		"	1266	46	Only RY on my specimen	
BD 259		"	1268	4x		
BD 260	41	Half Pice	xxxx	xx		

Baroda – Baroda Mint – Khande Rao, INO Muhammad Akbar II – Silver



	Rupee	Half Rupee	Quarter Rupee
Actual Weight (g)			
Actual Diameter (mm)			
Composition	Silver		

Catalogue

Cat No.	KM	Denomination	AH	RY	Comments	Rarity
BD 261	5	Rupee	1273	52		
BD 262		"	1274	53		
BD 263		"	1275	xx		
BD 264		"	128x	xx		
BD 265	4	Half Rupee	1267	xx		
BD 266		"	1272	52		
BD 267		"	1274	54		
BD 268		"	1275	xx		
BD 269		"	1282	xx		
BD 270	3	Quarter Rupee	1273	52		
BD 271		"	1278	xx		

**Baroda – Baroda Mint – Khande Rao, INO Muhammad Akbar II –
Copper**



	Pice	Half Pice
Actual Weight (g)		
Actual Diameter (mm)		
Composition	Copper	

Catalogue

Cat No.	KM	Denomination	AH	RY	Comments	Rarity
BD 273	2	Pice	127x	52		
BD 274	1.2	Half Pice	xxxx	xx		

**Baroda – Baroda Mint – Khande Rao, INO Commander of the
Sovereign Band – Gold**



Actual Weight (g)		Actual Diameter (mm)		Composition	Gold
-------------------	--	----------------------	--	-------------	------

Catalogue

Cat No.	KM	Denomination	AH	RY	Comments	Rarity
BD 275	B13	Quarter Mohur	127x	xx		RRR

**Baroda – Baroda Mint – Khande Rao, INO Commander of the
Sovereign Band – Milled Silver – Type 1**

Differs from next type in having slightly different legend in second line of reverse



Actual Weight (g)		Actual Diameter (mm)		Composition	Silver
-------------------	--	----------------------	--	-------------	--------

Catalogue

Cat No.	KM	Denomination	AH	RY	Comments	Rarity
BD 277	14.1	Nazarana Rupee	1287	xx		S
BD 278	13	Nazarana Half Rupee	1287	xx		RRR

**Baroda – Baroda Mint – Khande Rao, INO Commander of the
Sovereign Band – Milled Silver – Type 2**

Slight difference in second line of reverse compared to previous coin



Actual Weight (g)

Actual Diameter (mm)

Composition Silver

Catalogue

Cat No.	KM	Denomination	AH	RY	Comments	Rarity
BD 280	14.2	Nazarana Rupee	1287	xx		S

**Baroda – Baroda Mint – Khande Rao, I NO Commander of the
Sovereign Band – Silver – Type 3**



	Rupee	Half Rupee	Quarter Rupee	Eighth Rupee
Actual Weight (g)				
Actual Diameter (mm)				
Composition	Silver			

Catalogue

Cat No.	KM	Denomination	AH	RY	Comments	Rarity
BD 282	12	Rupee	1274	xx		
BD 283		"	1275	xx		
BD 284		"	1276	xx		
BD 285		"	1277	xx		
BD 286		"	1278	xx		
BD 287		"	1279	xx		
BD 288		"	1280	xx		
BD 289		"	1281	xx		
BD 290		"	1282	xx		
BD 291		"	1283	xx		
BD 292		"	1284	xx		
BD 293		"	1285	xx		
BD 294		"	1286	xx		
BD 295		"	1287	xx		

Continued on next page

Catalogue

Cat No.	KM	Denomination	AH	RY	Comments	Rarity
BD 296	11	Half Rupee	1274	xx		
BD 297		"	1275	xx		
BD 298		"	1275	xx	Full flan strike. Described as Nazarana by KM (A13)	RRR
BD 299		"	1276	xx		
BD 300		"	1277	xx		
BD 301		"	1278	xx		
BD 302		"	1279	xx		
BD 303		"	1280	xx		
BD 304		"	1282	xx		
BD 305		"	1284	xx		
BD 306		"	1286	xx		
BD 307	10	Quarter Rupee	1274	xx		
BD 308		"	1282	xx		
BD 309		"	1283	xx		
BD 310		"	1286	xx		
BD 311	9	Eighth Rupee	1282	xx		

Baroda – Baroda Mint – Khande Rao, INO Commander of the Sovereign Band – Copper – Type 1, Scimitar & Hoof



	Double Pice	Pice	Half Pice
Actual Weight (g)			
Actual Diameter (mm)			
Composition	Copper		

Catalogue

Cat No.	KM	Denomination	AH	RY	Comments	Rarity
BD 315	8	Double Pice	1281	xx		
BD 316		"	1282	xx		
BD 317		"	1284	xx		
BD 318		"	1285	xx		
BD 319	7.8	Pice	1281	xx		
BD 320		"	1282	xx		
BD 321		"	1283	xx		
BD 322		"	1284	xx		
BD 323		"	1285	xx		
BD 324	6a	Half Pice	1281	xx		
BD 325		"	1285	xx		

**Baroda – Baroda Mint – Khande Rao, INO Commander of the
Sovereign Band – Copper – Type 2, Scimitar**



	Pice	Half Pice
Actual Weight (g)		
Actual Diameter (mm)		
Composition	Copper	

Catalogue

Cat No.	KM	Denomination	AH	RY	Comments	Rarity
BD 327	7.7	Pice	1274	xx		
BD 328		"	1275	xx		
BD 329		"	1276	xx		
BD 330		"	1277	xx		
BD 331	6	Half Pice	1275	xx		
BD 332		"	1276	xx		
BD 333		"	1277	xx		

Baroda – Baroda Mint – Malhar Rao, Silver

No Photo
Available

No Photo
Available

	Four Rupees	Two Rupees	Rupee
Actual Weight (g)			
Actual Diameter (mm)			
Composition	Silver		

Catalogue

Cat No.	KM	Denomination	AH	RY	Comments	Rarity
BD 335	22A	Nazarana Four Rupees	1288	xx		RRR
BD 336	22	Nazarana Double Rupee	1288	xx		RRR
BD 337	21a	Nazarana Rupee	1288	xx		RR

Baroda – Baroda Mint – Malhar Rao. Silver



	Rupee	Half Rupee	Quarter Rupee	Eighth Rupee
Actual Weight (g)	10.70-11.60	5.35-5.80	2.68-2.90	1.34-1.45
Actual Diameter (mm)				
Composition	Silver			

Catalogue

Cat No.	KM	Denomination	AH	RY	Comments	Rarity
BD 338	21	Rupee	1287	xx		
BD 339		"	1288	xx		
BD 340		"	1289	xx		
BD 341		"	1290	xx		
BD 342		"	xxxx	122		
BD 343	20	Half Rupee	1287	xx		
BD 344		"	1288	xx		
BD 345		"	1289	xx		
BD 346		"	1290	xx		
BD 347	19	Quarter Rupee	1290	xx		
BD 348	18	Eighth Rupee	129x	xx		

Baroda – Baroda Mint – Malhar Rao, Copper



	Double Pice	Pice
Actual Weight (g)	18.76	
Actual Diameter (mm)		
Composition	Copper	

Catalogue

Cat No.	KM	Denomination	AH	RY	Comments	Rarity
BD 350	-	Nazarana Double Pice	1289	xx		RRR
BD 351	A17	Nazarana Pice	1289	xx		RR

Baroda – Baroda Mint – Malhar Rao, Copper

	Double Pice	Pice	Half Pice
Actual Weight (g)			
Actual Diameter (mm)			
Composition	Copper		

Catalogue

Cat No.	KM	Denomination	AH	RY	Comments	Rarity
BD 353	17	Double Pice	1288	xx		
BD 354		"	1289	xx		
BD 355		"	1290	xx		
BD 356	16	Pice	1288	xx		
BD 357		"	1289	xx		
BD 358		"	1290	xx		
BD 359	15	Half Pice	1288	xx		
BD 360		"	1290	xx		

Baroda – Baroda Mint – Sayaji Rao III, Silver – Hammered

	Rupee	Half Rupee	Quarter Rupee	Eighth Rupee
Actual Weight (g)				
Actual Diameter (mm)				
Composition	Silver			

Catalogue

Cat No.	KM	Denomination	AH	RY	Comments	Rarity
BD 362	29	Rupee	1292	xx		
BD 363		"	1293	xx		
BD 364		"	1294	xx		
BD 365		"	1295	xx		
BD 366		"	1297	xx		
BD 367		"	1298	xx		
BD 368		"	1299	xx		
BD 369		"	1300	xx		
BD 370		"	1301	xx		
BD 371		"	1302	xx		

Continued on next page

Catalogue

Cat No.	KM	Denomination	AH	RY	Comments	Rarity
BD 372	28	Half Rupee	1292	xx		
BD 373		"	1293	xx		
BD 374		"	1294	xx		
BD 375		"	1295	xx		
BD 376		"	1297	xx		
BD 377		"	1298	xx		
BD 378		"	1299	xx		
BD 379		"	1300	xx		
BD 380		"	1301	xx		
BD 381		"	1302	xx		
BD 382	27	Quarter Rupee	1292	xx		
BD 383		"	1299	xx		
BD 384	26	Eighth Rupee	1294	xx		
BD 385		"	1295	xx		
BD 386		"	1297	xx		
BD 387		"	1299	xx		
BD 388		"	130x	xx		

Baroda – Baroda Mint – Sayaji Rao III, Copper – Hammered

	Double Pice	Pice	Half Pice
Actual Weight (g)			
Actual Diameter (mm)			
Composition	Copper		

Catalogue

Cat No.	KM	Denomination	VS	RY	Comments	Rarity
BD 390	25	Double Pice	1937			
BD 391		"	1947			
BD 392		"	1948			
BD 393	24	Pice	1937			
BD 394		"	1947			
BD 395		"	1948			
BD 396		"	1948/7			
BD 397	23	Half Pice	1937			
BD 398		"	1947			
BD 399		"	1948			

Baroda – Baroda Mint – Sayaji Rao III, Copper – Hammered – Machine Punched Blanks



	Double Pice	Pice
Actual Weight (g)		
Actual Diameter (mm)		
Composition	Copper	

Catalogue

Cat No.	KM	Denomination	VS	RY	Comments	Rarity
BD 400	25a	Double Pice	1949			
BD 401	24a	Pice	1949			

Baroda – Baroda Mint – Sayaji Rao III, Gold – Milled – Type 1



	Mohur	Third Mohur	Sixth Mohur
Actual Weight (g)	7.12	2.38	1.18
Actual Diameter (mm)			
Composition	Gold		

Catalogue

Cat No.	KM	Denomination	VS	RY	Comments	Rarity
BD 403	A39	Mohur	1942			R
BD 404	A38	Third Mohur	1942			R
BD 405	A37	Sixth Mohur	1943		Axes ↑↓	R

Baroda – Baroda Mint – Sayaji Rao III, Gold – Milled – Type 2



	Mohur	Third Mohur	Sixth Mohur
Actual Weight (g)	7.14	2.39	
Actual Diameter (mm)			
Composition	Gold		

Catalogue

Cat No.	KM	Denomination	VS	RY	Comments	Rarity
BD 407	39	Mohur	1945			
BD 408		AE OMS Mohur	1945			
BD 409		"	1946		Slightly different design from other years	
BD 410		"	1947			
BD 411		"	1952			
BD 412		"	1953			
BD 413		"	1959			
BD 414	38	Third Mohur	1952			
BD 415		"	1953		This date is very rare	
BD 416		"	1959			
BD 417	37	Sixth Mohur	1951			
BD 418		"	1952			
BD 419		"	1953			
BD 420		"	1959			

Baroda – Baroda Mint – Sayaji Rao III, Silver – Milled – Pattern – Type 1



Actual Weight (g)		Actual Diameter (mm)		Composition	Silver
-------------------	--	----------------------	--	-------------	--------

Catalogue

Cat No.	KM	Denomination	VS	Comments	Rarity
BD 422	Pn44	Rupee	1943		RRR

Baroda – Baroda Mint – Sayaji Rao III, Silver – Milled – Pattern – Type 2



Actual Weight (g)	Actual Diameter (mm)	Composition	Silver
-------------------	----------------------	-------------	--------

Catalogue

Cat No.	KM	Denomination	VS	Comments	Rarity
BD 424		Rupee	1943		RRR

Baroda – Baroda Mint – Sayaji Rao III, Silver – Milled – Pattern – Type 3



Actual Weight (g)	Actual Diameter (mm)	Composition	Silver
-------------------	----------------------	-------------	--------

Catalogue

Cat No.	KM	Denomination	VS	Comments	Rarity
BD 425		Rupee	1943		RR
BD 426		AE OMS Rupee	1943		RRR
BD 427		Tin Uniface Obverse		Wt = 9.99. Diam = 28.4mm	RRR
BD 428		Tin Uniface Obverse		Wt = 173.03g. Diam = 72.1mm. Plain edge. HUGE!	RRR
BD 429		Tin Uniface Reverse		Wt = 31.25g. Diam = 35.4mm. Plain edge	RRR

Baroda – Baroda Mint – Sayaji Rao III, Silver – Milled – Type 1



	Rupee	Half Rupee	Four Annas	Two Annas
Actual Weight (g)				
Actual Diameter (mm)				
Composition	Silver			

Catalogue

Cat No.	KM	Denomination	VS	RY	Comments	Rarity
BD 431	36	Rupee	1948			
BD 432		"	1949			
BD 433	35	Half Rupee	1948			
BD 434		"	1949			
BD 435	34	Four Annas	1949			
BD 436	33	Two Annas	1949			

Baroda – Baroda Mint – Sayaji Rao III, Silver – Milled – Type 2



	Rupee	Half Rupee	Four Annas	Two Annas
Actual Weight (g)				
Actual Diameter (mm)				
Composition	Silver			

Catalogue

Cat No.	KM	Denomination	VS	RY	Comments	Rarity
BD 438	36a	Rupee	1951			
BD 439		"	1952			
BD 440		"	1953			
BD 441		"	1954			
BD 442		"	1955			
BD 443		"	1956			
BD 444	35a	Half Rupee	1951			
BD 445		"	1952			
BD 446	34a	Four Annas	1951			
BD 447		"	1952			
BD 448	33a	Two Annas	1951			
BD 449		"	1952			

Baroda – Baroda Mint – Sayaji Rao III, Copper – Milled – Obv. Legend Curved



	Double Pice	Pice
Actual Weight (g)		
Actual Diameter (mm)		
Composition	Copper	

Catalogue

Cat No.	KM	Denomination	VS	RY	Comments	Rarity
BD 450	32.1	Double Pice	1940			
BD 451		"	1941			
BD 452	31.1	Pice	1940			
BD 453		"	1941			
BD 454		"	1942			

**Baroda – Baroda Mint – Sayaji Rao III, Copper – Milled – Obv. Legend
Straight, Thick Planchet**



	Double Pice	Pice	Half Pice
Actual Weight (g)			
Actual Diameter (mm)			
Composition	Copper		

Catalogue

Cat No.	KM	Denomination	AH	RY	Comments	Rarity
BD 546	32.2	Double Pice	1942			
BD 457		"	1943			
BD 458		"	1944/3			
BD 459		"	1944			
BD 460		"	1945			
BD 461		"	1946			
BD 462		"	1947			
BD 463	T82	Trial strike of reverse in Lead				
BD 464	31.2	Pice	1941			
BD 465		"	1942			
BD 466		"	1943			
BD 467		"	1944			
BD 468		"	1945			
BD 469		"	1946			
BD 470		"	1947			
BD 471	30.2	Half Pice	1944		Annulets between letters on obverse	
BD 472		"	1944			
BD 473		"	1945			
BD 474		"	1946			
BD 475		"	1947			

Baroda – Baroda Mint – Sayaji Rao III, Copper – Milled – Thin Planchet



	Double Pice	Pice	Half Pice
Actual Weight (g)			
Actual Diameter (mm)			
Composition	Copper		

Catalogue

Cat No.	KM	Denomination	VS	RY	Comments	Rarity
BD 477	32.2a	Double Pice	1948			
BD 478		"	1949/4			
BD 479		"	1949/8			
BD 480		"	1950			
BD 481	31.2a	Pice	1948			
BD 482		"	1949			
BD 483		"	1950			
BD 484	30.2a	Half Pice	1948			
BD 485		"	1949			
BD 486		"	1950			

Baroda – Baroda Mint – Pratap Singh, Gold



	Mohur	Third Mohur
Actual Weight (g)		
Actual Diameter (mm)		
Composition	Gold	

Catalogue

Cat No.	KM	Denomination	VS	Comments	Rarity
BD 488	41	Mohur	1995		
BD 489	41a	AR Mohur	1995	Silver OMS Restrike	
BD 490	40	Third Mohur	1995		
BD 491	40a	AR Third Mohur	1995	Silver OMS Restrike	