

Moghul Empire – Jahāngīr – Aḥmadābād Mint, Gold – Type 1



تا جهان باشد روان باد یاله

jahāngīr shāh akbar shāh inscribed in 'Mihrab'-shaped cartouche. Outside is the first part of a couplet: *ilāhī taa jahan baashad rawaan baad* (From the Divine to the World (Wordly), has become current)



ب شرق و غرب مهر احمدآباد

sanah 14 julūs sanah 1028 inscribed in 'Mihrab'-shaped cartouches. Outside is the second part of the couplet: *ba-sharq wa gharb muhr-i-aḥmadābād* (in the East and the West, the stamp of Aḥmadābād)

Actual Weight (g)

Actual Diameter (mm)

Metal Gold

Catalogue

Cat No.	KM	Denomination	AH	RY	Comments	Rarity
JH	178.2	Mohur	1028	14		
JH		"	1029			
JH		"	1030	15		
JH		"	1033	18		
JH		"	1033	19		

Moghul Empire – Jahāngīr – Aḥmadābād Mint, INO Nūr Jahān – Gold – Type 2

No Photo

Available

No Photo

Available

Actual Weight (g)

Actual Diameter (mm)

Metal Gold

Catalogue

Cat No.	KM	Denomination	AH	RY	Comments	Rarity
JH	190.1	Mohur	1034	19		
JH		"	1037	2x		

Moghul Empire – Jahāngīr – Aḥmadābād Mint, Silver – Type 1 – Quarter Rupee Niṣār



Actual Weight (g) 2.86 Actual Diameter (mm) 21.5 Metal Silver

Catalogue

Cat No.	KM	Denomination	AH	RY	Comments	Rarity
JH	163.2	Quarter Rupee Niṣār	1027	12	Large flan	
JH		"	1027	13	Large flan	
JH		"	1027	22	Large flan	

Moghul Empire – Jahāngīr – Aḥmadābād Mint, Silver – Type 2 – Quarter Rupee Niṣār



Actual Weight (g) 2.86 Actual Diameter (mm) Metal Silver

Catalogue

Cat No.	KM	Denomination	AH	RY	Comments	Rarity
JH	163.4	"	1034	19		

Moghul Empire – Jahāngīr – Aḥmadābād Mint, Silver – Type 3 – Eighth Rupee Niṣār



Khair Qubūl (Graces received)



ḡarb aḥmadābād [RY]

Actual Weight (g) ~1.4 Actual Diameter (mm) Metal Silver

Catalogue

Cat No.	KM	Denomination	AH	RY	Comments	Rarity
JH	-	Eighth Rupee Niṣār	xxxx	33		RRR

Moghul Empire – Jahāngīr – Aḥmadābād Mint, Silver – Type 4 – 1/32 Rupee Niṣār



Khair Qubūl (Graces received)



zarb aḥmadābād [RY]

Actual Weight (g) ~0.4

Actual Diameter (mm)

Metal Silver

Catalogue

Cat No.	KM	Denomination	AH	RY	Comments	Rarity
JH	-	1/32 Rupee Niṣār	xxxx	33		RRR

Moghul Empire – Jahāngīr – Aḥmadābād Mint, INO Salīm Shāh, Silver – Type 5, Ābān Ilāhī 50

No Photo

Available

No Photo

Available

Actual Weight (g)

Actual Diameter (mm)

Metal Silver

Catalogue

Cat No.	KM	Denomination	RY	Comments	Rarity
JH	140.1A	Rupee	50		RR

Moghul Empire – Jahāngīr – Aḥmadābād Mint, INO Salīm Shāh, Silver – Type 6, Ilāhī 50, Āzar to Isfandārmuz



RY at bottom



	Rupee	Half Rupee
Actual Weight (g)		
Actual Diameter (mm)		
Composition	Silver	

Catalogue

Cat No.	KM	Denomination	RY	Month	Month	Comments	Rarity
JH	140.1	Rupee	50 of Akbar	-	Āzar	Baldwin (2006), sale 47, lot 692	
JH		"	50 of Akbar	-	Dī	Baldwin (2006), sale 47, lot 692	
JH		"	50 of Akbar	-	Bahman	Baldwin (2006), sale 47, lot 692	
JH		"	50 of Akbar	-	Isfandārmuz	Baldwin (2006), sale 47, lot 692	

Moghul Empire – Jahāngīr – Aḥmadābād Mint, INO Salīm Shāh, Silver – Type 7, RY

2



RY at bottom



	Rupee	Half Rupee
Actual Weight (g)		
Actual Diameter (mm)		
Composition	Silver	

Catalogue

Cat No.	KM	Denomination	RY	Month	Month	Comments	Rarity
JH	140.2	"	-	2 of Jahāngīr	Fārwardīn	Baldwin (2006), sale 47, lot 692	
JH		"	-	2 of Jahāngīr	Ardībihisht	Baldwin (2006), sale 47, lot 692	
JH		"	-	2 of Jahāngīr	Khūrdād	Baldwin (2006), sale 47, lot 692	
JH		"	-	2 of Jahāngīr	Tīr	Baldwin (2006), sale 47, lot 692	
JH	133.2	Half Rupee	-	2 of Jahāngīr	Fārwardīn		RR
JH		"	-	2 of Jahāngīr	Ardībihisht		

**Moghul Empire – Jahāngīr – Ahmadābād Mint, Silver – Type 8 – Heavy Issue
Jahāngīrī (20% overweight)**



	Rupee	Half Rupee
Actual Weight (g)		
Actual Diameter (mm)		
Composition	Silver	

Catalogue

Cat No.	KM	Denomination	AH	RY	Comments	Rarity
JH	152.2	Rupee	1014	1		
JH		"	1015	1		
JH		"	1015	2	Posted on Zeno database by AntiqueShoppe	
JH		"	1016	2		
JH		"	1017	3		
JH		"	1018	x	S. Album (2006), list 217, lot 887	
JH	139.3	Half Rupee (Sulṭānī)	1016	x		RRR

**Moghul Empire – Jahāngīr – Ahmadābād Mint, Silver – Type 9 – Heavy Issue Sawāī
(25% overweight)**



	Rupee	Half Rupee
Actual Weight (g)	14.26-14.40	
Actual Diameter (mm)	19.5-22	
Composition	Silver	

Catalogue

Cat No.	KM	Denomination	AH	RY	Comments	Rarity
JH	158.3	Rupee	1017	3		
JH		"		4		
JH		"	1018	5	See also: Baldwin (2007), Spring Argentum sale, lot 255	
JH		"	1019	6		
JH		"	1020	6		
JH	A139.1	"	xxxx	3		
JH		"	xxxx	6		

Moghul Empire – Jahāngīr – Ahmadābād Mint, Silver – Type 10 – Decorative Border



Notice the toothed border on the right side.

Actual Weight (g)	Actual Diameter (mm)	Metal	Silver
-------------------	----------------------	-------	--------

Catalogue

Cat No.	KM	Denomination	AH	RY	Comments	Rarity
JH		Rupee	1020	7	This may not be a different type. Merely a specimen of the normal type below showing the border?	R

Moghul Empire – Jahāngīr – Ahmadābād Mint, Silver – Type 11, Normal Type



	Rupee	Half Rupee
Actual Weight (g)	11.28-11.48	
Actual Diameter (mm)	~19-20	
Composition	Silver	

Catalogue

Cat No.	KM	Denomination	AH	RY	Month	Comments	Rarity
JH	145.2	Rupee	1020	x	Ābān		S
JH		"		x	Āzar		
JH		"		x	Bahman		
JH		"	1020	7	Āzar		
JH		"		7	Ābān		
JH		"	1021	7	Ardībihisht		
JH		"	1021	7	Khūrdād		
JH		"	1021	7	Ābān		
JH		"	1021	7	Āzar		
JH		"	1021	7	Bahman		
JH		"	1022	8	Tīr		
JH	-	Half Rupee	1020	?	Ābān		RR

Moghul Empire – Jahāngīr – Aḥmadābād Mint, Silver – Type 12 – Transitional Type



Actual Weight (g)

Actual Diameter (mm)

Metal Silver

Catalogue

Cat No.	KM	Denomination	AH	RY	Month	Comments	Rarity
JH		Rupee	1021	8		Existence doubtful	S
JH		"	1022	8	Mihr		
JH		"	1022	8	Ābān		

Moghul Empire – Jahāngīr – Aḥmadābād Mint, Silver – Type 13, muzaiyan bad



AH bottom left. RY top right.

	Rupee	Half Rupee
Actual Weight (g)	11.28-11.48	5.56
Actual Diameter (mm)	~19-20	~17
Composition	Silver	

Catalogue

Cat No.	KM	Denomination	AH	RY	Month	Comments	Rarity
JH	149.2	Rupee	1022	8	Ābān	Ābān has a straight line at start of <i>muzaiyan bad</i>	
JH		"			Āzar		
JH		"			Fārwardīn		
JH		"			Bahman		
JH		"	1023	9	Shahrewar		
JH		"			Mihr		
JH		"			Bahman		
JH		"	1024	10	Āzar		
JH		"			Shahrewar		
JH		"			Bahman		
JH		"			Amardād		
JH		"			Khūrdād		
JH		"			Mihr		
JH		"	1024	11	Āzar	Ref: Album (2013), sale 15, lot 953	
JH		"	1025	11	Ābān		
JH		"			Mihr		
JH		"	1026	12	Āzar		
JH		"	1027	12	Bahman		
JH		"	1030	15		Ref: Baldwin (2008), Argentum sale 8 th Nov, lot618	

JH	137.1	Half Rupee	1022	xx		
JH		"	1023	xx		
JH		"	1024	10	Amardād	
JH		"	1025	xx		
JH		"	1026	xx		

Moghul Empire – Jahāngīr – Ahmadābād Mint, Silver – Type 14, haft kishwar

Struck from dies used for the gold Mohur



Actual Weight (g)	Actual Diameter (mm)	Metal	Silver
-------------------	----------------------	-------	--------

Catalogue

Cat No.	KM	Denomination	AH	RY	Comments	Rarity
JH	149.3	Rupee	1027	12		
JH		"	1029			

Moghul Empire – Jahāngīr – Ahmadābād Mint, Silver – Type 13 – Aries



Actual Weight (g)	Actual Diameter (mm)	Metal	Silver
-------------------	----------------------	-------	--------

Catalogue

Cat No.	KM	Denomination	AH	RY	Comments	Rarity
JH	150.2	Rupee	1027	13		

Moghul Empire – Jahāngīr – Ahmadābād Mint, Silver – Type 14 – Taurus



	Rupee	Half Rupee
Actual Weight (g)		
Actual Diameter (mm)		
Composition	Silver	

Catalogue

Cat No.	KM	Denomination	AH	RY	Comments	Rarity
JH	150.5	Rupee	1027	13		R
JH	-	Half Rupee	1027	13		RRR

Moghul Empire – Jahāngīr – Aḥmadābād Mint, Silver – Type 15 – Gemini



jahāngīr bādshāh, akbar bādshāh, ḡarb aḥmadābād

Actual Weight (g)	Actual Diameter (mm)	Metal	Silver
-------------------	----------------------	-------	--------

Catalogue

Cat No.	KM	Denomination	AH	RY	Comments	Rarity
JH	150.7	Rupee	1027	13		

Moghul Empire – Jahāngīr – Aḥmadābād Mint, Silver – Type 16 – Cancer



Actual Weight (g)	Actual Diameter (mm)	Metal	Silver
-------------------	----------------------	-------	--------

Catalogue

Cat No.	KM	Denomination	AH	RY	Comments	Rarity
JH	150.10	Rupee	1027	13		

Moghul Empire – Jahāngīr – Aḥmadābād Mint, Silver – Type 17 – Leo



	Rupee	Half Rupee
Actual Weight (g)		
Actual Diameter (mm)		
Composition	Silver	

Catalogue

Cat No.	KM	Denomination	AH	RY	Comments	Rarity
JH	150.11	Rupee	1027	13		R
JH	138.2	Half Rupee	1027	13		RRR

Moghul Empire – Jahāngīr – Aḥmadābād Mint, Silver – Type 18 – INO the Empress Nūr Jahān



AH bottom left. RY bottom right.

Actual Weight (g) Actual Diameter (mm) Metal Silver

Catalogue

Cat No.	KM	Denomination	AH	RY	Comments	Rarity
JH	168.2	Rupee	1033	19		
JH		"	1034	19		
JH		"	1036	21		
JH		"	1037	22		
JH	167.3	Half Rupee	1034	xx	ANS, New York. Very rare with date.	RR

Moghul Empire – Jahāngīr – Aḥmadābād Mint, Silver – Type 19, Inayat



Actual Weight (g) Actual Diameter (mm) Metal Silver

Catalogue

Cat No.	KM	Denomination	AH	RY	Comments	Rarity
JH		"	1027	13	RY at top of reverse	

Moghul Empire – Jahāngīr – Aḥmadābād Mint, Silver – Type 20, inayat

RY at centre left of reverse.



Actual Weight (g) Actual Diameter (mm) Metal Silver

Catalogue

Cat No.	KM	Denomination	AH	RY	Comments	Rarity
JH	149.4	Rupee	1027	13		
JH		"	1028	13		
JH		"	1028	14		
JH		"	1029	14		
JH		"	1029	15		
JH		"	1030	15		
JH		"	1030	16		
JH		"	1030	61	RY error for 16	
JH		"	1031	16		
JH		"	1031	17		
JH		"	1032	18		
JH		"	1033	18		
JH		"	1033	19		

Moghul Empire – Jahāngīr – Aḥmadābād Mint, Copper – Type 1, Cho Tānkī INO Salīm Shāh



chow tānkī /shāh salīm



[Month] ilāhī / aḥmadābād 50

Actual Weight (g) 15.56-15.92

Actual Diameter (mm) ~19.5-20

Metal Copper

Catalogue

Cat No.	KM	Denomination	AH	RY	Month	Comments	Rarity
JH		Cho Tānkī		50 of Akbar	Bahman		R
JH		"		50 of Akbar	Isfandārmuz		R
JH		"		2	Fārwardīn		R
JH		"		2	Khūrdād		R

Moghul Empire – Jahāngīr – Aḥmadābād Mint, Copper – Type 2, Do Tānkī INO Salīm Shāh



Actual Weight (g) 7.72

Actual Diameter (mm) ~15

Metal Copper

Catalogue

Cat No.	KM	Denomination	AH	RY	Month	Comments	Rarity
JH		Do Tānkī			Fārwardīn		R

Moghul Empire – Jahāngīr – Ahmadābād Mint, Copper – Type 3, 25% Heavy Dam



Actual Weight (g) 26.11 Actual Diameter (mm) ~22 Metal Copper

Catalogue

Cat No.	KM	Denomination	AH	RY	Comments	Rarity
JH		25% Heavy Dam	1017	3		RR

Moghul Empire – Jahāngīr – Ahmadābād Mint, Copper – Type 4, 25% Quarter Heavy Dam



Actual Weight (g) 4.89 Actual Diameter (mm) 14 Metal Copper

Catalogue

Cat No.	KM	Denomination	AH	RY	Comments	Rarity
JH		25% Heavy Dam	1017	3	Wt doesn't seem enough – should be about 6.5g	RR

Moghul Empire – Jahāngīr – Ahmadābād Mint, Copper – Type 5, 20% Heavy Dam



Actual Weight (g) 24.30-24.98 Actual Diameter (mm) ~21-23 Metal Copper

Catalogue

Cat No.	KM	Denomination	AH	RY	Comments	Rarity
JH		Heavy Dam	1016	2		RR
JH		"	1017	3		

Moghul Empire – Jahāngīr – Aḥmadābād Mint, Copper – Type 6, 20% Heavy Half Dam

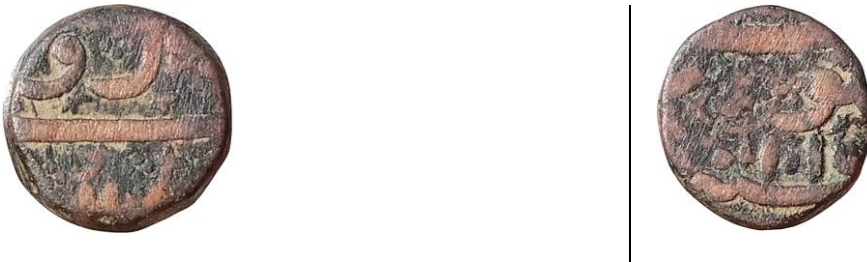


Actual Weight (g) 12 Actual Diameter (mm) ~16-16.5- Metal Copper

Catalogue

Cat No.	KM	Denomination	AH	RY	Comments	Rarity
JH		Heavy Half Dam			See Millancourt B (2007), JONS 192, p26 for discussion of heavy weight copper issues	RR

Moghul Empire – Jahāngīr – Aḥmadābād Mint, Copper – Type 7, 20% Heavy Quarter Dam



Actual Weight (g) 5.98 Actual Diameter (mm) ~14-14.5 Metal Copper

Catalogue

Cat No.	KM	Denomination	AH	RY	Comments	Rarity
JH		Heavy Quarter Dam	1015	2		RR

Moghul Empire – Jahāngīr – Aḥmadābād Mint, Copper – Type 8, Cho Tānkī



Actual Weight (g) 16.47-16.81 Actual Diameter (mm) ~19-20 Metal Copper

Catalogue

Cat No.	KM	Denomination	AH	RY	Comments	Rarity
JH		Cho Tānkī	1019	6		RR

Moghul Empire – Jahāngīr – Aḥmadābād Mint, Copper – Type 9, Dam Normal Weight



jahāngīrī sanah [AH] [RY]



falūs aḥmadābād, ilāhī māh [Month]

Actual Weight (g) ~20

Actual Diameter (mm) ~21

Metal Copper

Catalogue

Cat No.	KM	Denomination	AH	RY	Month	Comments	Rarity
JH		Dam	1025	11	Dī		R
JH		"	1026	11	Bahman		

Moghul Empire – Jahāngīr – Aḥmadābād Mint, Copper – Type 10, Half Dam, Normal Weight



Actual Weight (g) ~10

Actual Diameter (mm) ~17

Metal Copper

Catalogue

Cat No.	KM	Denomination	AH	RY	Month	Comments	Rarity
JH		Half Dam	xxxx	11?	Dī		

Moghul Empire – Jahāngīr – Aḥmadābād Mint, Copper – Type 11, Half Dam, Normal Weight, Dot Divider



Actual Weight (g) ~9.62

Actual Diameter (mm) ~18

Metal Copper

Catalogue

Cat No.	KM	Denomination	AH	RY	Month	Comments	Rarity
JH		Half Dam	xxxx	4			